



## The Resort Update Report

Donald Clouse  
CALRE #01065490  
(650) 483-7558  
Don.Clouse@cbnorcal.com  
www.ShelterCreek.condos  
Selling Shelter Creek since 1990



1427 Chapin Avenue, Burlingame

**SEPTEMBER 2022**

### Activity in Shelter Creek — 7/19/22-8/18/22

ACTIVE	PENDING	SOLD
Studio = 1 @ \$425,000	Studio = 2 @ \$395,000-399,000	Studio = 0
1 Bd = 3 @ \$525,000-559,000	1 Bd = 3 @ \$499,000-529,000	1 Bd = 2 @ \$540,000-545,000
2 Bd = 1 @ \$710,000	2 Bd = 0	2 Bd = 0

#### ***JUST LISTED***

**6229 Shelter Creek Lane**  
**Large Updated 1 BD, 1 BA w/Walk-in Closet**  
**Quiet Location**  
**List Price \$549,000**

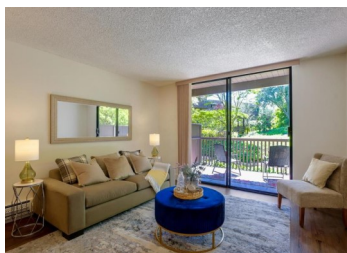


#### ***AVAILABLE***

**3251 Shelter Creek Lane**  
**Large Remodeled 1 BD, 1 BA**  
**Conveniently Located Close to All Amenities**  
**List Price \$559,000**

#### ***JUST SOLD***

**6257 Shelter Creek Lane**  
**Large Studio Located Near Back Pool**  
**New Carpet & Linoleum, Freshly Painted**  
**Sale Price \$410,000**



#### ***JUST SOLD***

**8129 Shelter Creek Lane**  
**Large Remodeled 1 BD, 1 BA**  
**Great Location, Peaceful Setting, Southern Exposure**  
**Sale Price \$545,000**