



The Resort Update Report

Donald Clouse
CALRE #01065490
(650) 483-7558
Don.Clouse@cbtnorcal.com
www.ShelterCreek.condos
Selling Shelter Creek since 1990



1427 Chapin Avenue, Burlingame

OCTOBER 2021

Activity in your Neighborhood — 8/17/21 - 9/15/21

ACTIVE

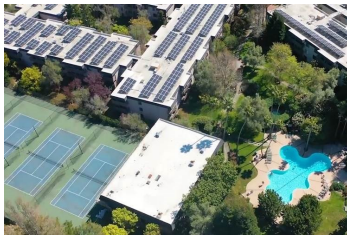
Studio = 3 @ \$395,000-\$399,000
1 Bd = 2 @ \$515,000-\$565,000
2 Bd = 0

PENDING

Studio = 0
1 Bd = 3 @ \$485,000-\$510,000
2 Bd = 0

SOLD

Studio = 1 @ \$385,000
1 Bd = 4 @ \$520,000-\$562,000
2 Bd = 2 @ \$675,000-\$690,000



JUST LISTED

6203 Shelter Creek Lane
Large 1 Bd, 1 Ba
Remodeled Kitchen, New Carpet, Freshly Painted
List Price \$515,000

JUST LISTED

7235 Shelter Creek Lane
Large Studio—Quiet Location
New Carpet, Freshly Painted
List Price \$399,000



RENTAL

6340 Shelter Creek Lane
Lg 1 Bd, 1 Ba—Courtyard Location
12 Month Lease
Rent \$1,995—Security Deposit \$2,195

JUST SOLD

1253 Crestwood Drive, South San Francisco
3 Bd, 2 Ba
9 Offers
List Price \$998,000—Sale Price \$1,240,000

