



## The Resort Update Report

Donald Clouse  
CALRE #01065490  
(650) 483-7558  
Don.Clouse@cbtnorcal.com  
www.ShelterCreek.condos  
Selling Shelter Creek since 1990



1427 Chapin Avenue, Burlingame

**JULY 2023**

### Activity in Shelter Creek — 5/16/2023—6/20/2023

ACTIVE	PENDING	SOLD
Studio = 0	Studio = 1 @ \$400,000	Studio = 3 @ \$385,000-435,888
1 Bd = 4 @ \$500,000-459,000	1 Bd = 1 @ \$538,000	1 Bd = 1 @ \$502,000-518,000
2 Bd = 0	2 Bd = 1 @ \$698,000	2 Bd = 1 @ \$730,000

#### ***JUST LISTED***

**7336 Shelter Creek Lane  
1 BD, 1 BA Top Floor  
Courtyard Location, Updated Kitchen and Bath  
List Price \$539,000**



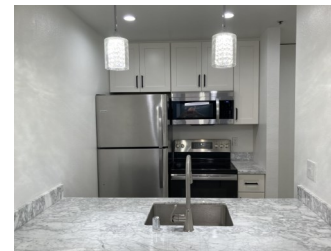
#### ***JUST LISTED***

**6255 Shelter Creek Lane  
1 BD, 1 BA**

**Remodeled Kitchen & Bathroom, Newer Carpeting  
List Price \$549,000**

#### ***JUST SOLD***

**6221 Shelter Creek Lane  
Large Remodeled Studio  
Great Location, Peaceful Setting  
Sales Price \$435,888**



#### ***JUST SOLD***

**6111 Shelter Creek Lane  
Large Studio  
1st Floor. Great Location  
Sales Price \$385,000**

***Don has sold over 300 units in Shelter Creek since 1990***