



## The Resort Update Report

Donald Clouse  
CALRE #01065490  
(650) 483-7558  
Don.Clouse@cbtnorcal.com  
www.ShelterCreek.condos  
Selling Shelter Creek since 1990



1427 Chapin Avenue, Burlingame

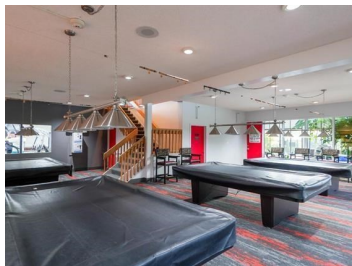
**JULY 2022**

### Activity in Shelter Creek — 5/17/22-6/21/22

ACTIVE	PENDING	SOLD
Studio = 1 @ \$399,500	Studio = 1 @ \$395,000	Studio = 1 @ \$435,000
1 Bd = 2 @ \$549,000-559,000	1 Bd = 3 @ \$525,000-529,000	1 Bd = 3 @ \$495,000-545,000
2 Bd = 0	2 Bd = 0	2 Bd = 3 @ \$650,000-742,000

#### ***JUST LISTED***

**8129 Shelter Creek Lane, San Bruno**  
**Large Remodeled 1 BD, 1 BA**  
**Great Location, Peaceful Setting, Southern Exposure**  
**List Price \$549,000**



#### ***COMING SOON***

**Building 3**  
**Large Remodeled 1 BD, 1 BA**  
**Conveniently Located Close to All Amenities**  
**List Price TBD**

#### ***JUST SOLD***

**1123 Shelter Creek Lane, San Bruno**  
**Large 1 BD, 1 BA with Bonus Room**  
**New Carpet, Freshly Painted**  
**Sales Price \$495,000**



### **Don has sold over 300 units in Shelter Creek since 1990**

The benefits of working with Don:

- > Resident of Shelter Creek since 2002
- > Extensive knowledge of value and “do’s and don’ts” at Shelter Creek
- > Readily available to show your unit weekdays, weekends, day and night

***Call Don with any questions or for a free consultation***