



The Resort Update Report

Donald Clouse
CALRE #01065490
(650) 483-7558
Don.Clouse@cbtnorcal.com
www.ShelterCreek.condos
Selling Shelter Creek since 1990



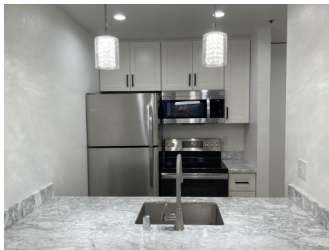
1427 Chapin Avenue, Burlingame

APRIL 2023

Activity in Shelter Creek — 2/23/2023-3/15/2023

ACTIVE	PENDING	SOLD
Studio = 3 @ \$387,000-439,888	Studio = 1 @ \$425,000	Studio = 1 @ \$380,000
1 Bd = 1 @ \$520,000	1 Bd = 2 @ \$520,000-538,000	1 Bd = 1 @ \$518,000
2 Bd = 1 @ \$665,888	2 Bd = 0	2 Bd = 1 @ \$690,000

AVAILABLE
1226 Shelter Creek Lane
2 BD, 2 BA
Freshly Painted, New Carpet
New Price \$665,888



AVAILABLE
6221 Shelter Creek Lane
Large Remodeled Studio
Great Location, Peaceful Setting
Sales Price \$439,888

RENTAL
2208 Shelter Creek Lane
Large 1 BD, 1 BA w/Walk-in Closet
Quiet Courtyard Location
Monthly Rent \$2,300—Security Deposit \$2,500



Don has sold over 300 units in Shelter Creek since 1990

The benefits of working with Don:

- > Resident of Shelter Creek since 2002
- > Extensive knowledge of value and “do’s and don’ts” at Shelter Creek
- > Readily available to show your unit weekdays, weekends, day and night

Call Don with any questions or for a free consultation