

DEVELOPMENT PROJECTS

CITY OF

OXNARD



CALIFORNIA

Community Development Department
January Quarterly Update

Residential Developments Overview

1. Northshore
2. Avalon Homes
3. Dansk II Apartments
4. Cypress Place at Garden City
5. Portofino Place
6. Sandhu Apartments
7. Encanto Homes
8. Habitat for Humanity's Tiny Homes
9. Lockwood Senior Apartments
10. Lockwood II Senior Apartments
11. 1345 North Oxnard Blvd Apartments
12. Lockwood III Apartments
13. Ives Apartment Project
14. Albany Apartments
15. Harrison Avenue Apartments



1. Northshore at Mandalay Bay

Residential Projects
Under Construction

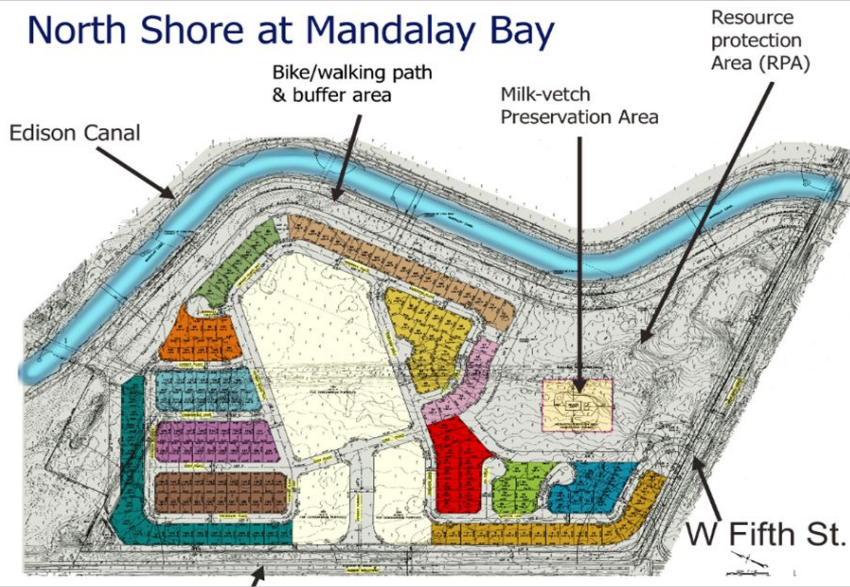


Harbor Boulevard & Fifth Street

- An approved project with 183 single-family residences, 109 detached condominiums and private streets.
- Open space and common areas
- Public bike and walking path
- 90.26 acres

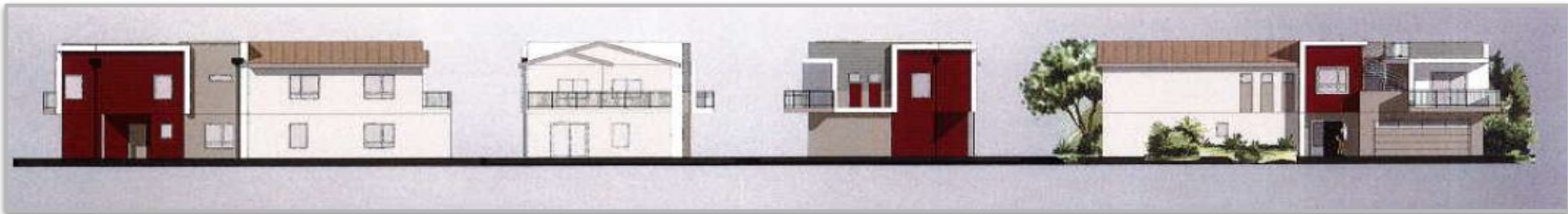
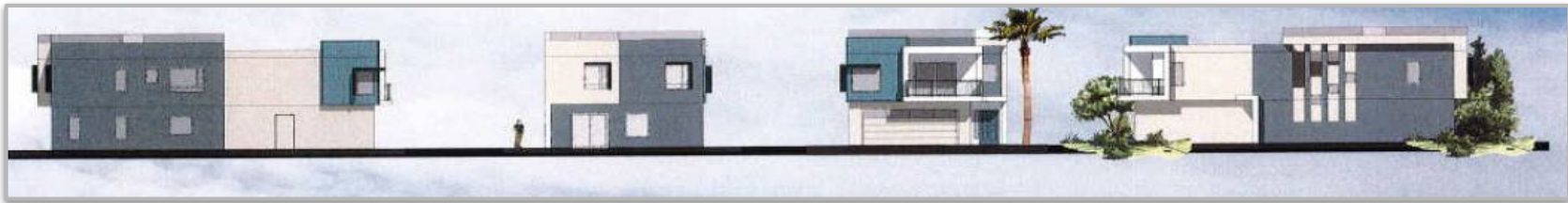
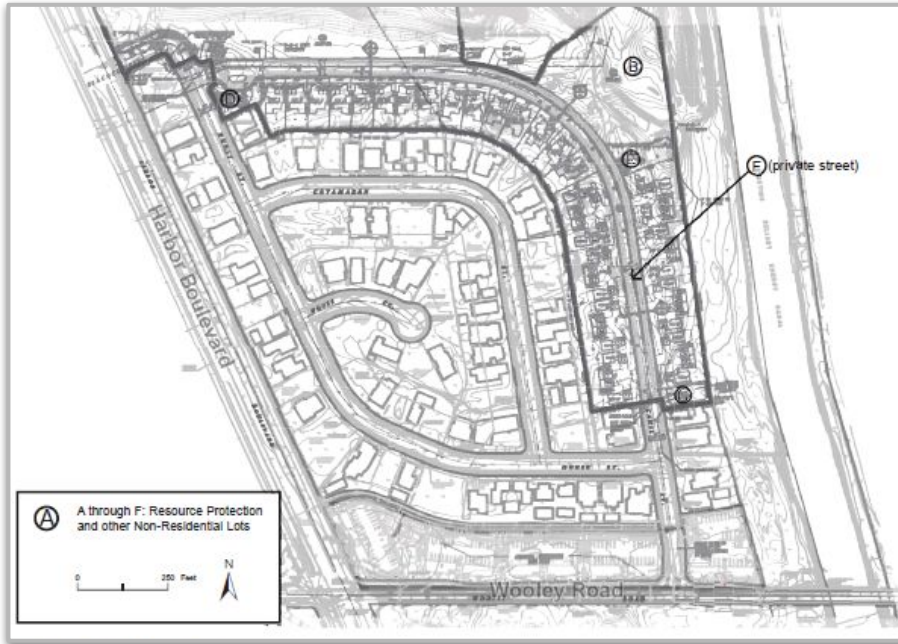


North Shore at Mandalay Bay



Harbor Boulevard & Wooley Road

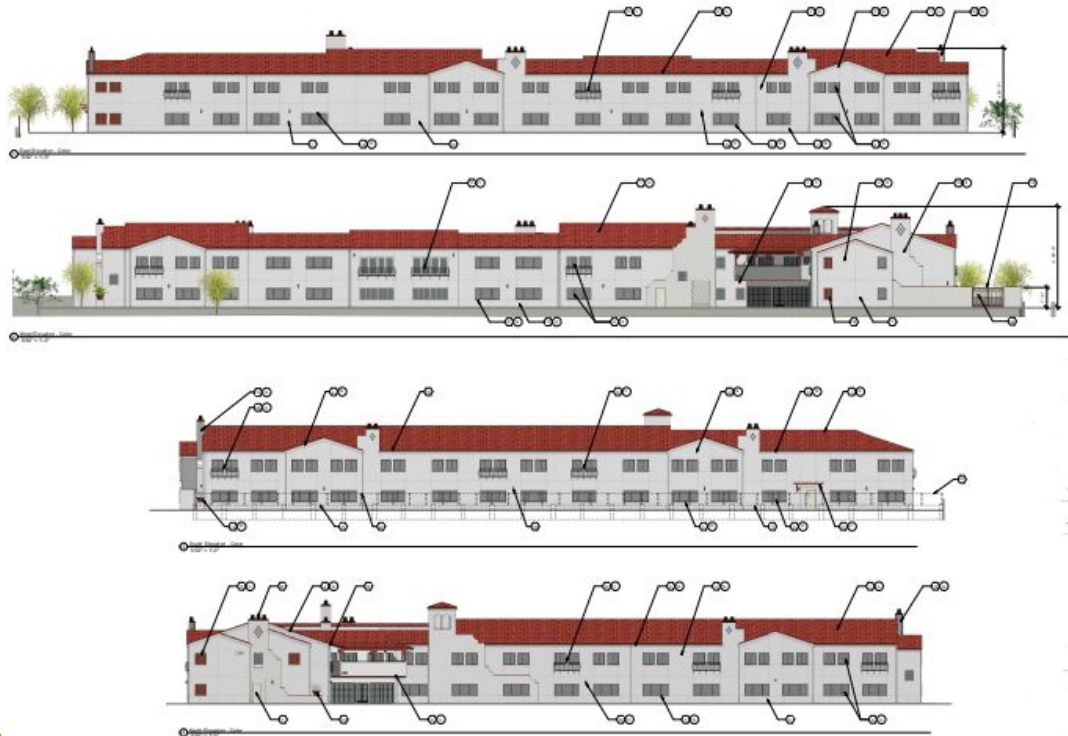
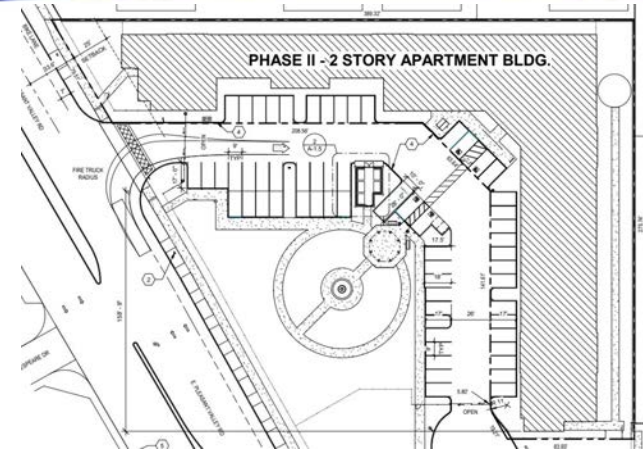
- Proposed: 56 maximum units
- 15 single-family residences or 30 duplex and 35 cluster single-family residences
- Draft EIR circulated Dec. 2019- Feb. 2020
- Project has been redesigned to reduce the maximum residential units from 65 to 56



3. Dansk II Apartments (Phase II)

2300 East Pleasant Valley Road

- Proposed 48 unit apartment building



4. Cypress Place at Garden City

5482 & 5536 Cypress Road

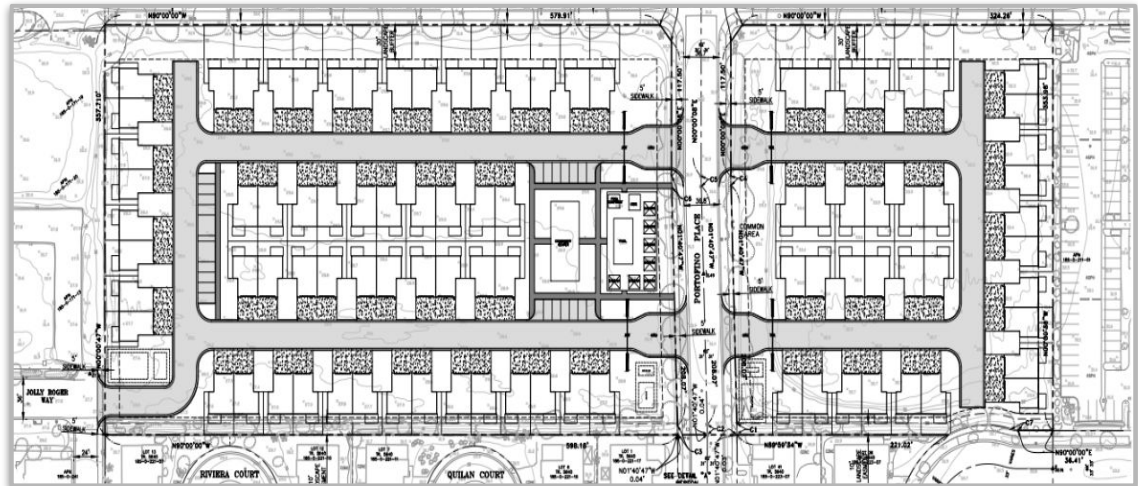
- 150 unit apartment complex
- 3 story bldgs on 5.22 ac site
- 1 to 3 bedroom units, ranging in size between 572 sf-1,012 sf



5. Portofino Place

Fifth Street & Portofino Place

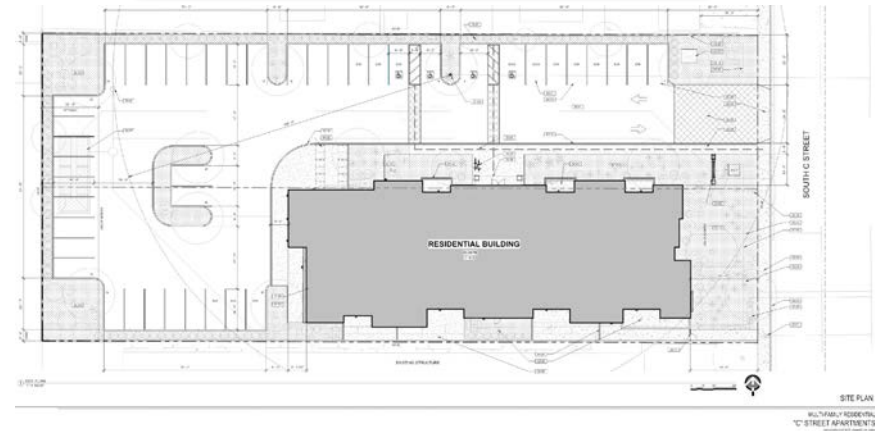
- General Plan amendment from Business Research Park to Low-Medium Residential.
- Zone Change required from Business & Research Park to Multi-Family Residential.
- Proposed 90 units on 7.6- acre site.
- 9 affordable units required or in-lieu fee payment.
- 2 & 3 bedroom floor plan options/ 990 sq. ft. to 1,053 sq. ft. living space.
- Gated community
- Private roads.
- Community recreational building and pool.



6. Sandhu Apartments

1227 and 1239 South C Street

- A proposed 23 unit apartment complex
- Unit mix includes: 3 Very Low Income unit and 2 Low income units
- Merge two adjacent parcels together
- Develop the property with a 32,239 Square Foot 3 story apartment building with 43 on-site uncovered parking spaces
- Amenities: Fitness center, community room, landscaping, and rooftop deck with barbecue area



7. Encanto

Residential Projects Under Construction

1101 West Second Street

- 27 single family detached, single story homes on 3.1 acre site with lots ranging between 3,838 sf- 9,752 sf
- 3 bedroom, two bathroom
- 7 Affordable homes



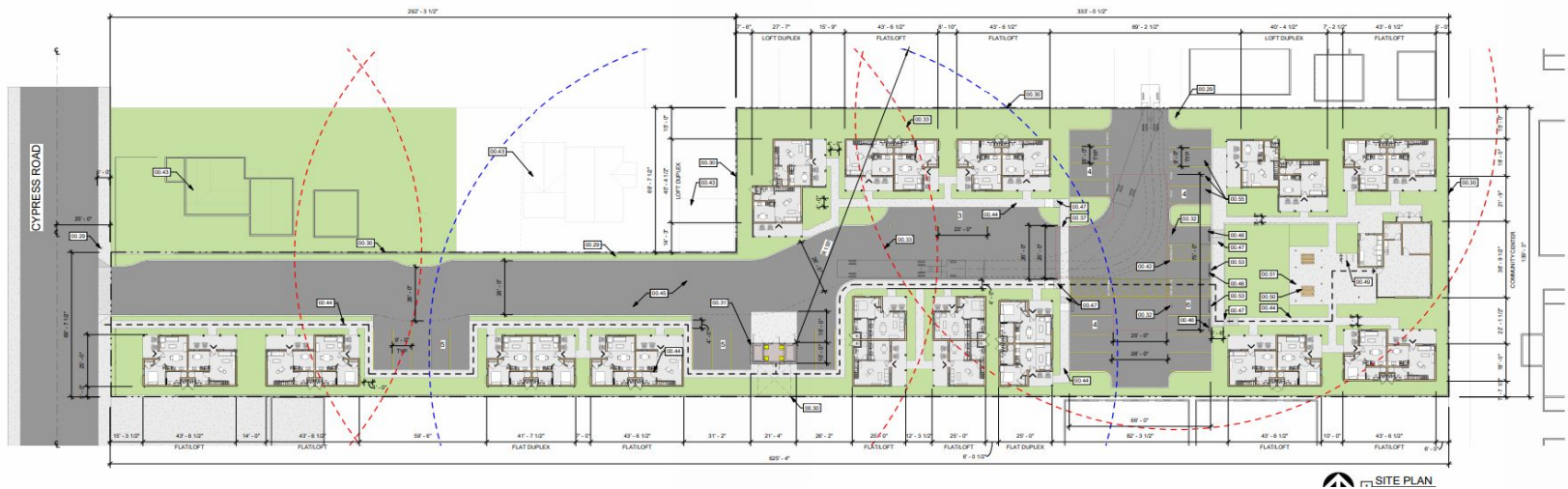
chucco body Merlex Glacier White p-100 Santa Barbara finish	trim Dunn Edwards DET493 Mayan Chocolate	roofing Eagle Roofing Capistrano 3523 Dark Terracotta	windows Artisan Amico Artisan Bronze



8. Habitat for Humanity's Tiny Homes

5208 & 5230 Cypress Road

- 28 residential units within 14 duplex buildings.
- 15 studio units and 13 one-bedroom units (28 residential total units)
- Community amenities include: an office, community room and laundry facility with in a detached building.



9. Lockwood Senior Apartments

2151 Lockwood Street

- Proposed 173-unit Active Senior Apartment Community for adults age 55-plus on a 3.6- acre site
- 100 percent affordable
- Community recreational building and pool



WEST ELEVATION



SOUTHWEST VIEW



NORTHWEST VIEW

10. Lockwood II Senior Apartments

2151 Lockwood Street

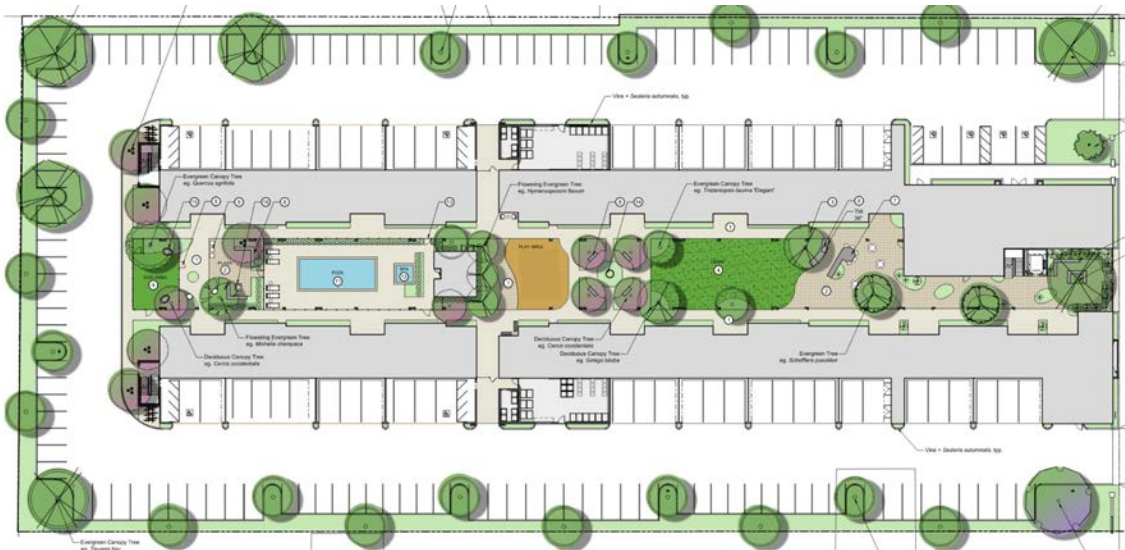
- Proposed 168-unit Active Senior Apartment Community for adults age 55-plus on a 3.08-acre site
- 100 percent affordable
- Community recreational building and portable barbeques



11. 1345 North Oxnard Blvd Apartments

1345 North Oxnard Blvd

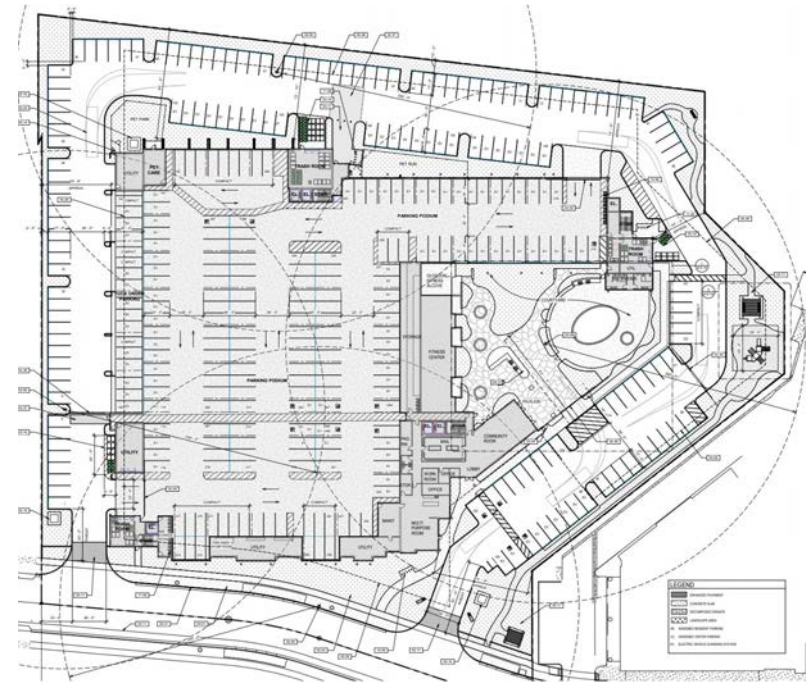
- 4-story, 142-Unit Apartment Complex on 3.07-acre site
- 78, 1-bedroom units & 60, 2-bedroom units
- 19 Affordable (5 very low/14 lower income) Units
- 180 parking space (uncovered and w/in ground floor)
- Amenities include: lobby areas, club and fitness center, community rooms; Outdoor BBQ and dining, pool, spa and restrooms, courtyard activity areas, sky decks, and dog run area.



12. Lockwood III Apartments

2151 Lockwood Street

- 5-story, 234-Unit Apartment Complex on 5.17-acre site
- 86 one-bedroom units, 104 two-bedroom units, 24 three-bedroom units, & 20 studio units
- 351 parking space (uncovered and w/in ground floor)
- Amenities include: lobby areas, club and fitness center, community rooms; Outdoor BBQ and dining, pool, spa and restrooms, courtyard activity areas, sky decks, and dog run area.



13. Ives Apartments Project

1620 Ives Avenue

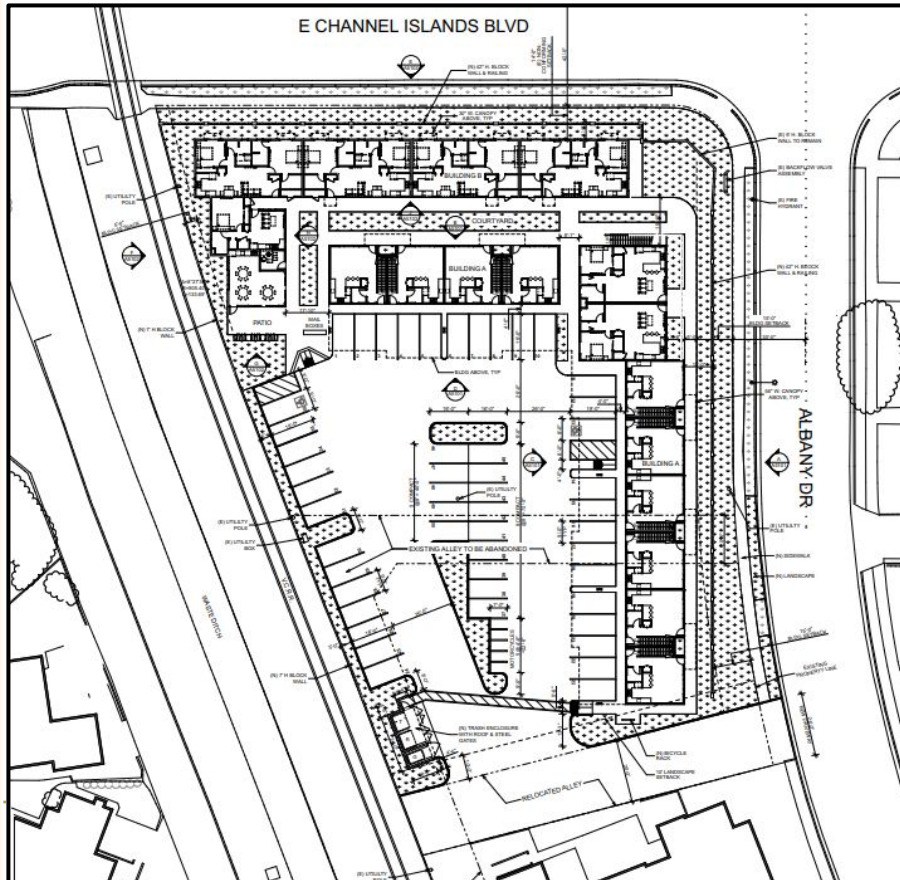
- 78 multi-family housing units within nine 3-story buildings on 3-acre site
- A mix of 12 one-bedroom units and 66 two-bedroom units
- 79 parking space



14. Albany Apartments

2929 Albany Drive

- Redevelopment of an existing school site and new construction for a 19-unit apartment complex.
- 50 parking spaces



15. Harrison Avenue Apartments

155 North Harrison Avenue

- Development of a vacant lot
- 100% Affordable
- 96 units, 96 parking spaces
- Lot Merger, Zone Change, General Plan Amendment, Special Use Permit, Density Bonus



2025-02-18 13:18

2025-02-18 13:16

Commercial Developments Overview

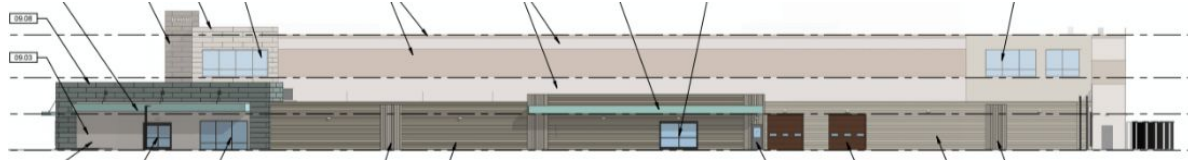
1. U-Haul
2. Pleasant Valley Plaza
3. TRU Hotel by Hilton
4. Oxnard Express Car Wash
5. Fast Food Restaurant - Ives Avenue
6. Starbucks at Lemon Grove Plaza
7. Daya Enterprises
8. Carl's Jr. Project
9. Mister Carwash



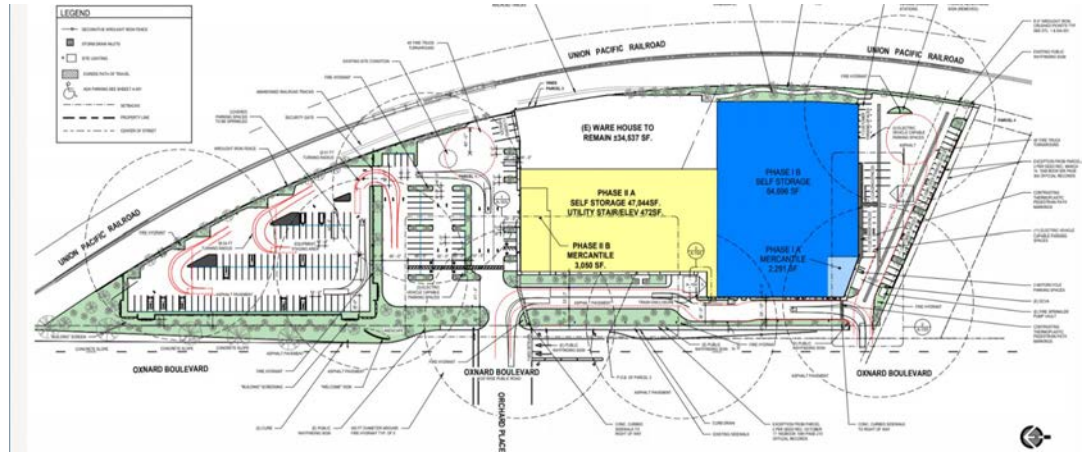
1. U-Haul of North Oxnard

2420 North Oxnard Boulevard

- Proposed 5,341 sf retail space
- Truck rental and storage
- 34,537 sf container storage
- 201,796 sf mini-warehouse



OXNARD BLVD. SCREEN WALL SOUTHBOUND



08.02

2. Pleasant Valley Plaza Renovation

Commercial Projects
Under Construction

Northwest Corner of Pleasant Valley Road and Saviers Road

- Complete renovation existing shopping center property and addition of a 10,000 sf commercial building



3. TRU Hotel by Hilton

180 West Esplanade Avenue

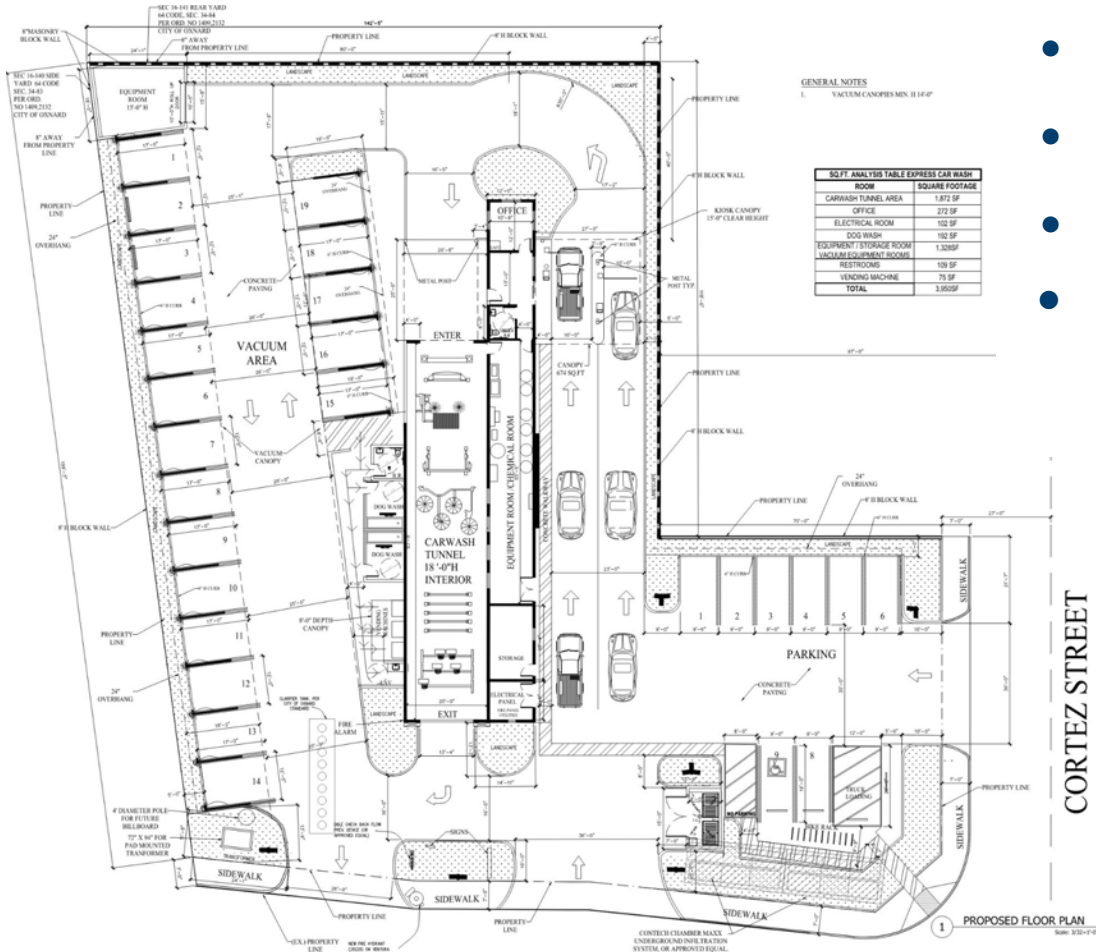
- Proposed 5-story, 88 room hotel
- 44,370 sf



4. Oxnard Express Car Wash

481 - 491 Ventura Boulevard

- Automated, self-serve car wash
- 3,950 square foot building
- Canopy with 19 vacuum stalls
- Eight parking stalls

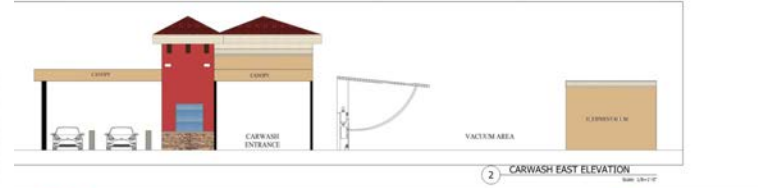


VENTURA BOULEVARD

CORTEZ STREET



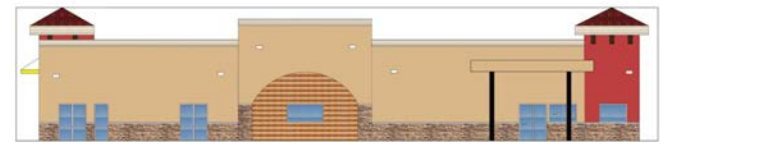
1 CARWASH WEST ELEVATION Scale: 1/8"=1'-0"



2 CARWASH EAST ELEVATION Scale: 1/8"=1'-0"



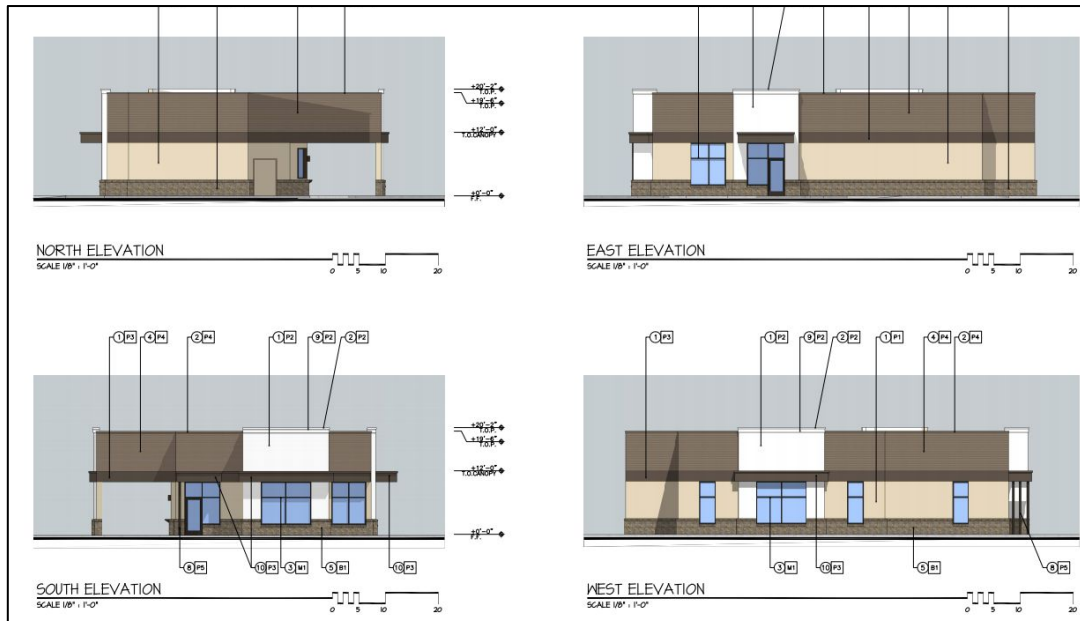
3 CARWASH NORTH ELEVATION Scale: 1/8"=1'-0"



5. Fast Food Restaurant - Ives Avenue

1600 Ives Avenue

- Demolition of existing events center (existing monument sign and public art will remain on site)
- Development of:
- 2,533 square-foot fast food restaurant with drive thru
- Related improvements (parking, trash enclosure, sidewalks, patios, and landscaping)



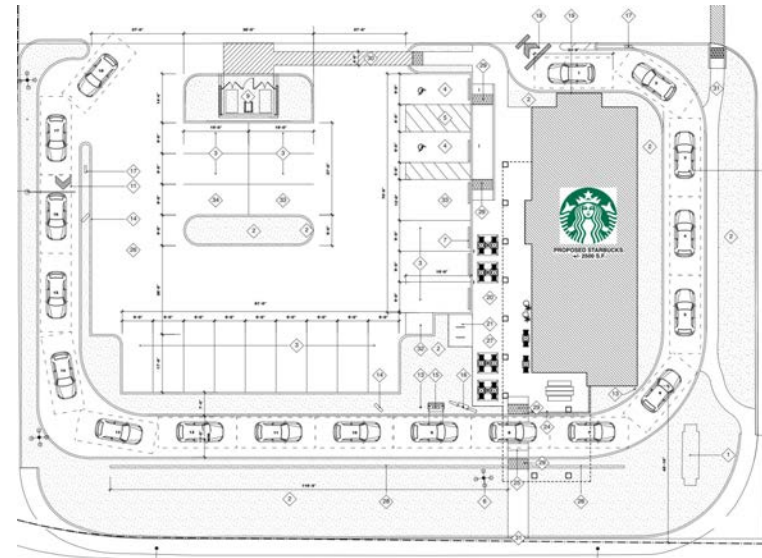
6. Starbucks at Lemon Grove Plaza

2011 N Oxnard Blvd.

- 2,500 square-foot coffee shop with drive thru
- Related improvements (parking, trash enclosure, sidewalks, patios, and landscaping)



SOUTH ELEVATION



7. Daya Enterprises

Northwest corner of Saviers Rd and Hueneme Rd

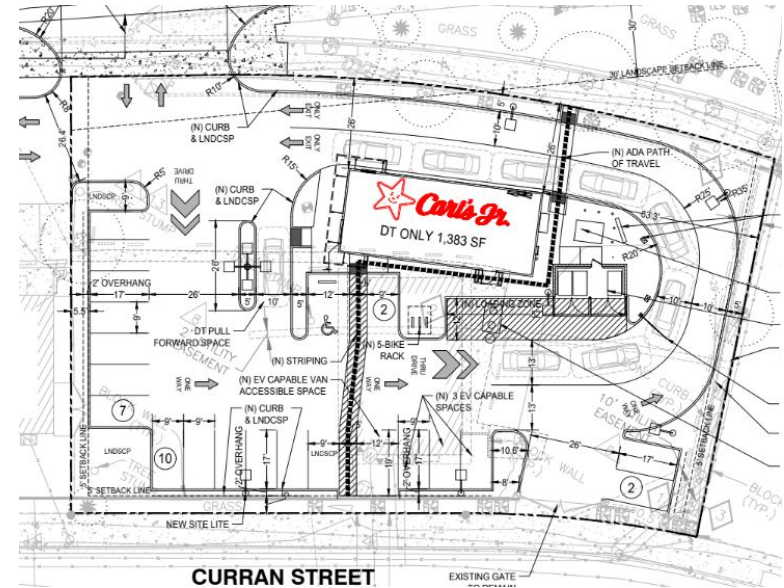
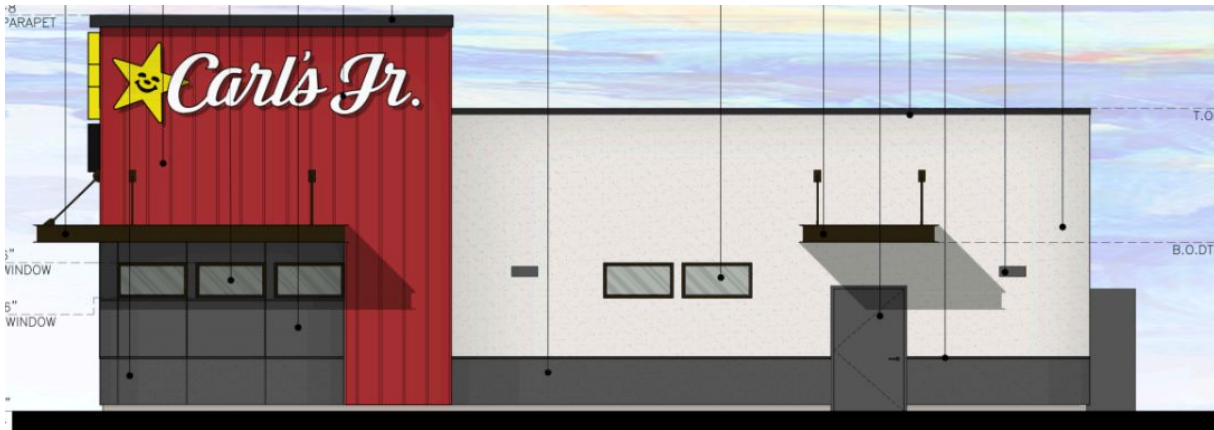
- A request to construct a new two-story, 2,755 square-foot, 24-hour convenience store with a second floor 1,700 square foot office area.
- Fuel canopy with eight fuel stations, parking area, trash enclosure and related site improvement on a vacant 19,602 square-foot site.



8. Carl's Jr

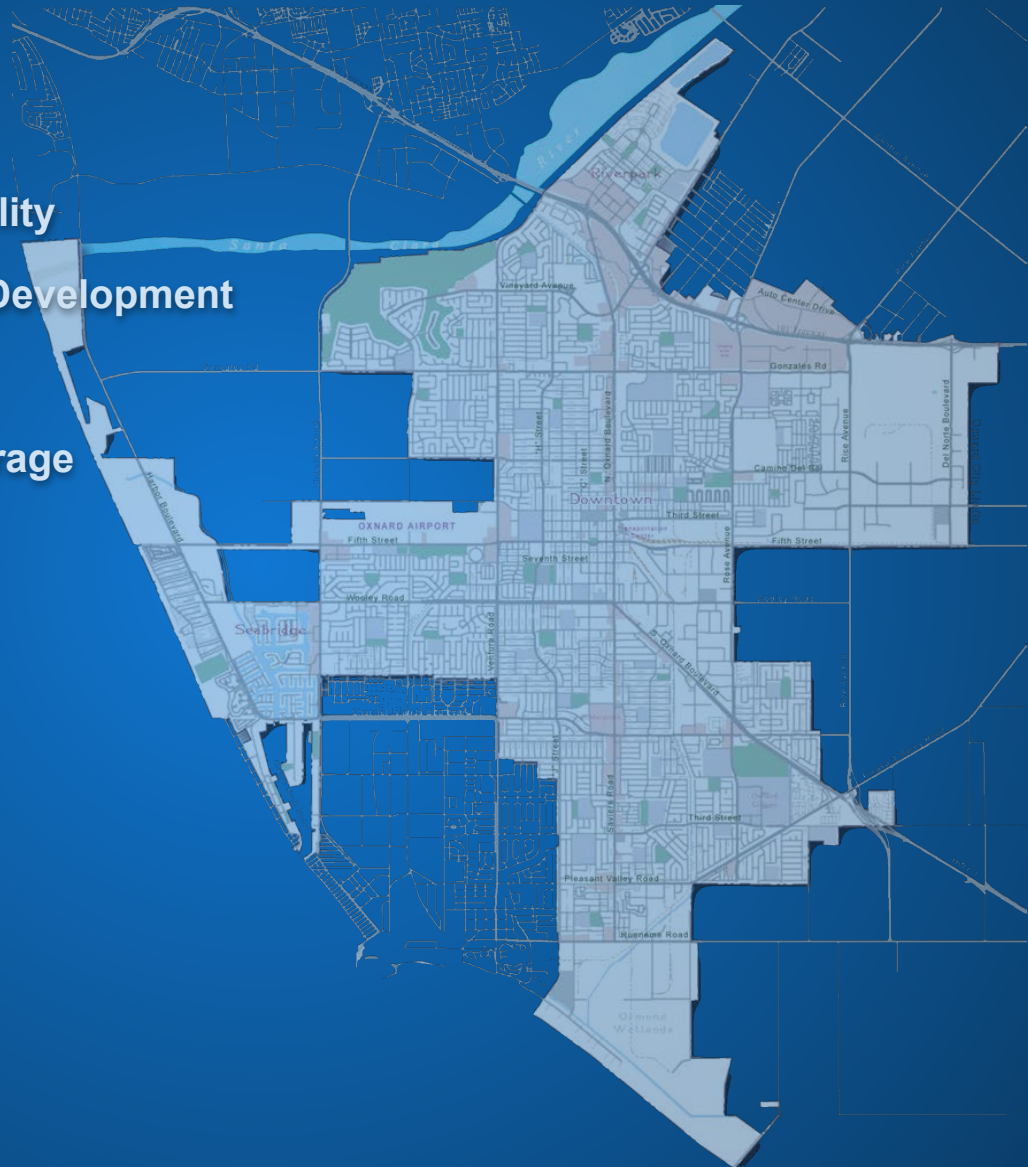
2100 E Pleasant Valley Rd.

- 1,383 square-foot drive thru only fast food restaurant
- Related improvements (parking, trash enclosure, sidewalks, landscaping)



Industrial Developments Overview

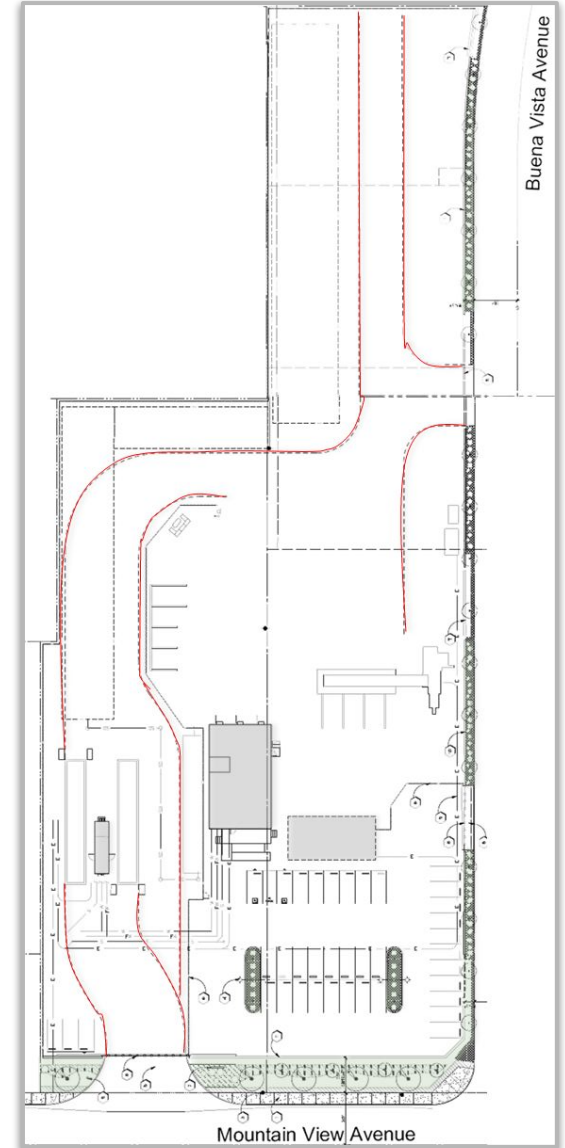
1. SA Recycling
2. Pantoja Trucking
3. Arcturus Cold Storage Facility
4. Solar Pacific Professional Development
5. 101 Logistics Center
6. 6001 Arcturus Outdoor Storage
7. Trojan Self Storage



1. SA Recycling

1421-1441 Mountain View Avenue

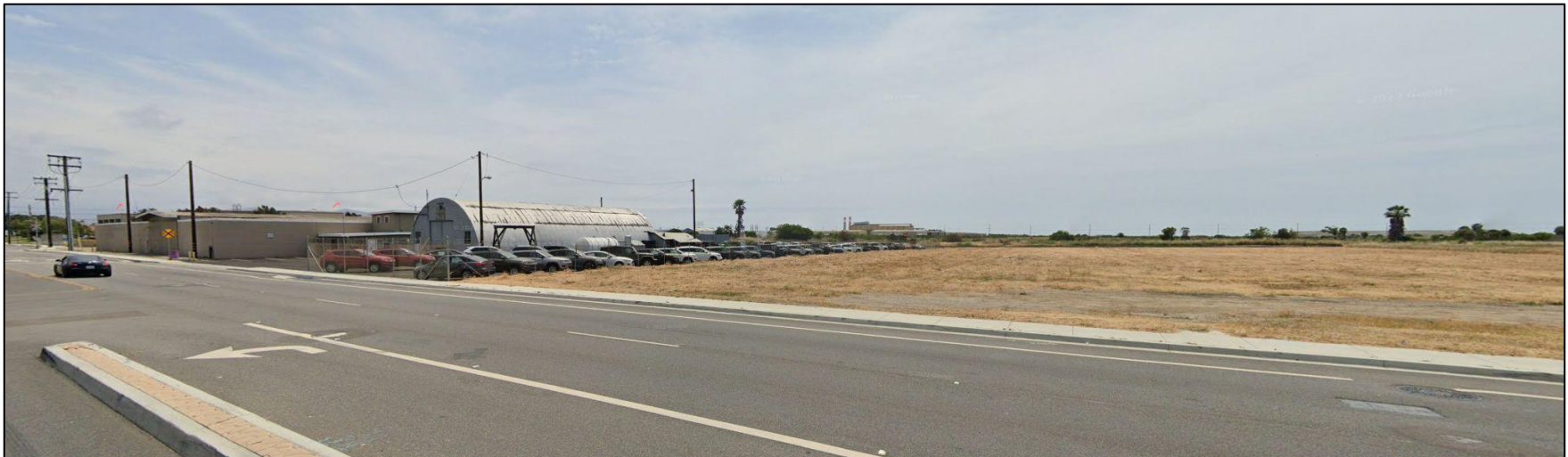
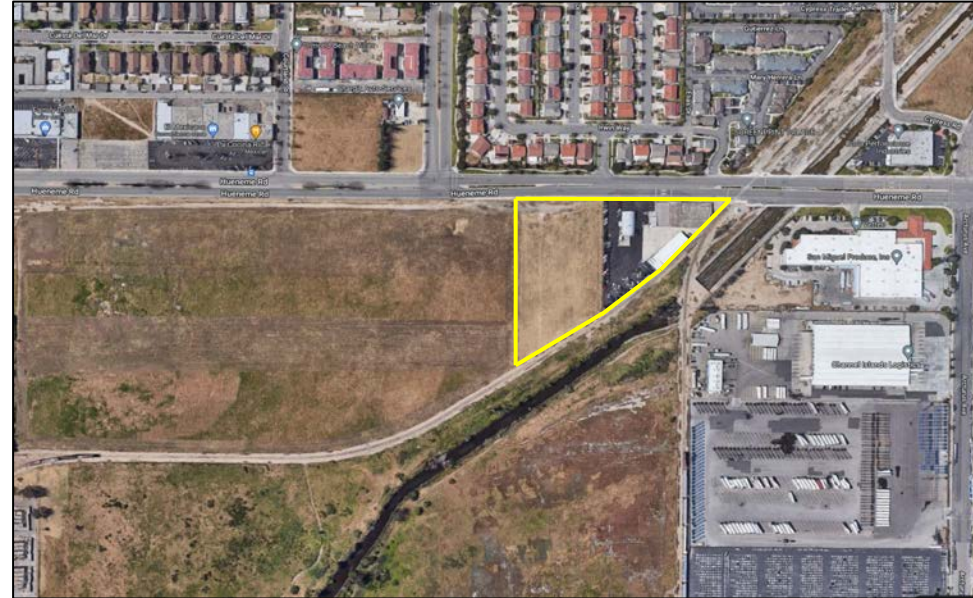
- A proposed 2,400 sf office and outdoor recycling center



2. Pantoja Trucking

320 E Hueneme Road

- Expansion of existing freight yard
- No new structures
- Truck Storage



3. Arcturus Cold Storage Facility

5980-5990 Arcturus Avenue

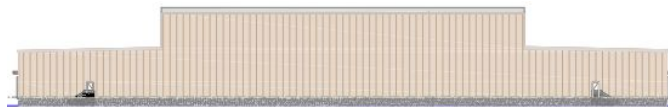
- 103,705 square foot cold storage building that will include 36 loading docks along two building sides
- 270 truck/container storage spaces with electrical connections
- Area for 90 containers to be stacked 3 levels high



NORTH



SOUTH



EAST

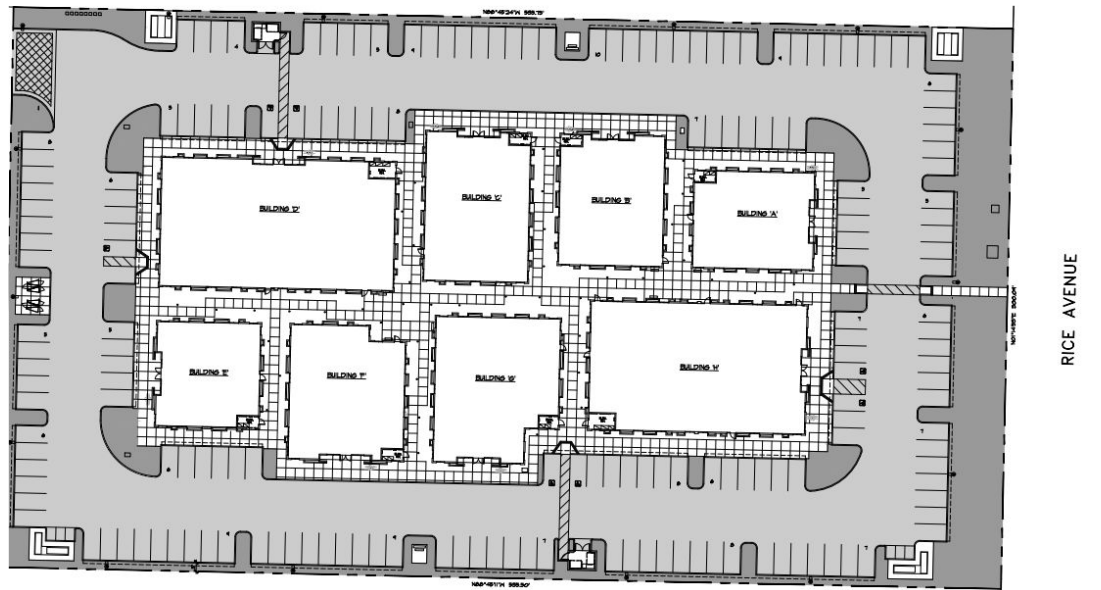


WEST



1750 Solar Drive

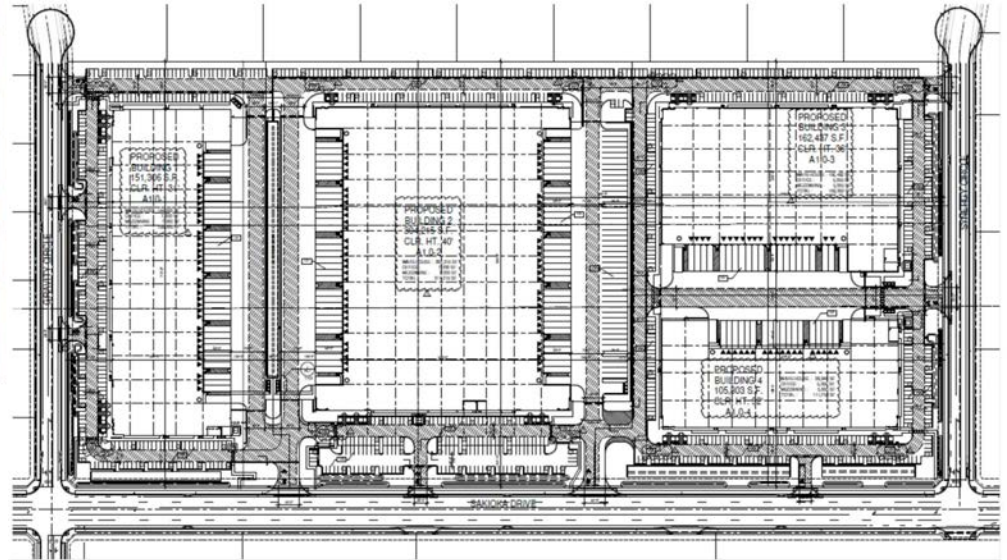
- 8 buildings totalling 42,816 square feet with building areas ranging between 3,008 and 8,519 square feet.
- Tentative subdivision map proposes to subdivide the 3.69 acre site into nine parcels





Sakioka Farms Business Park

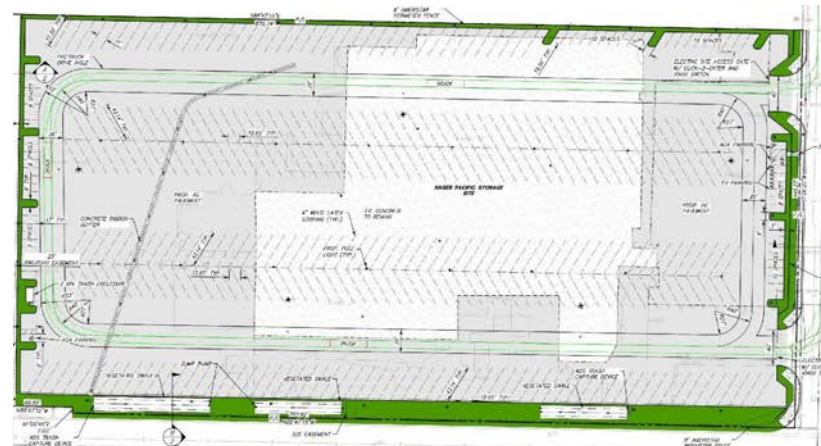
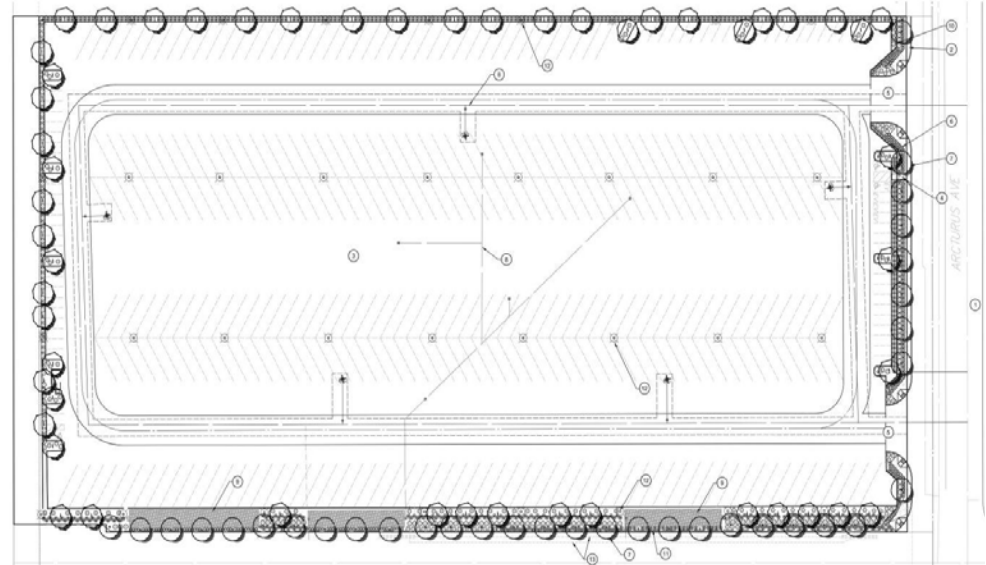
- 4 warehouse buildings
- 778,720 square feet total development



6. Outdoor Storage Yard

6001 Arcturus Avenue

- 352,501 sf of paved parking
- 27,038 sf of landscaping
- 38 overhead lights
- Four (4) fire hydrants
- Bioswale and storm drain on the southern edge of the parking lot.
- 8.7 acre project site

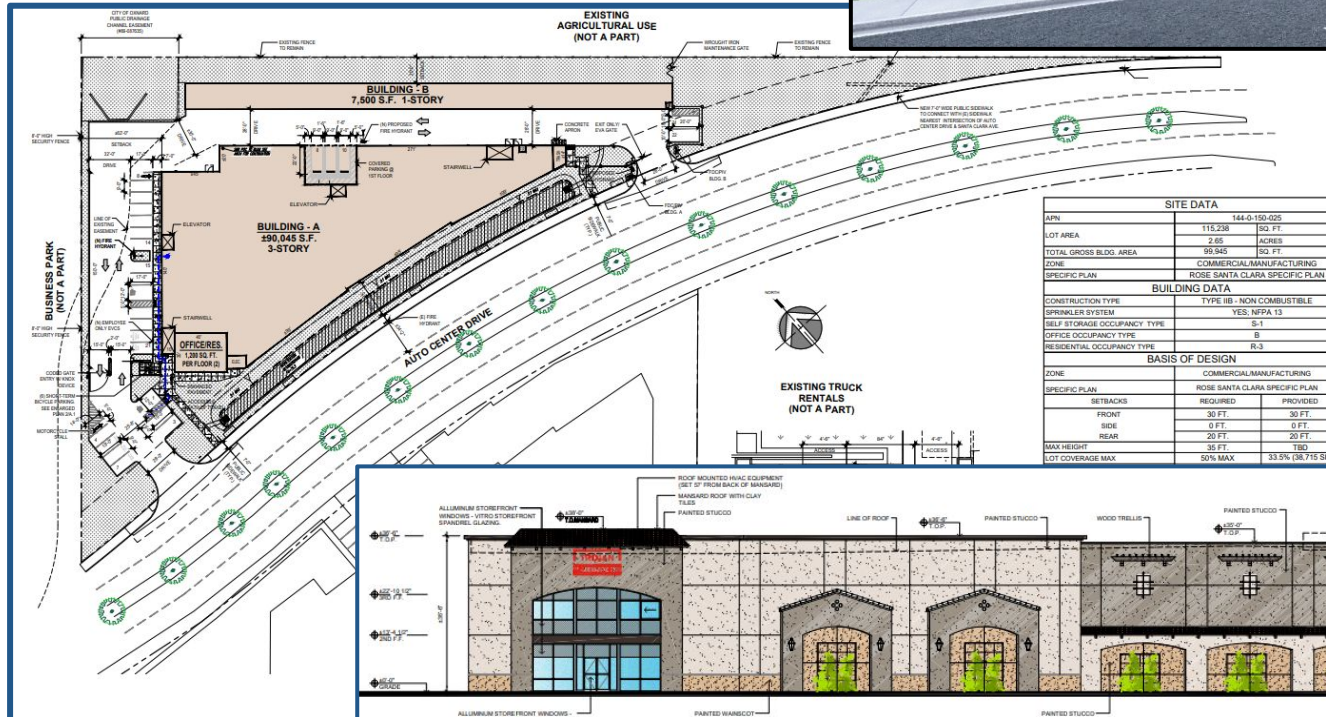


7. Trojan Self-Storage

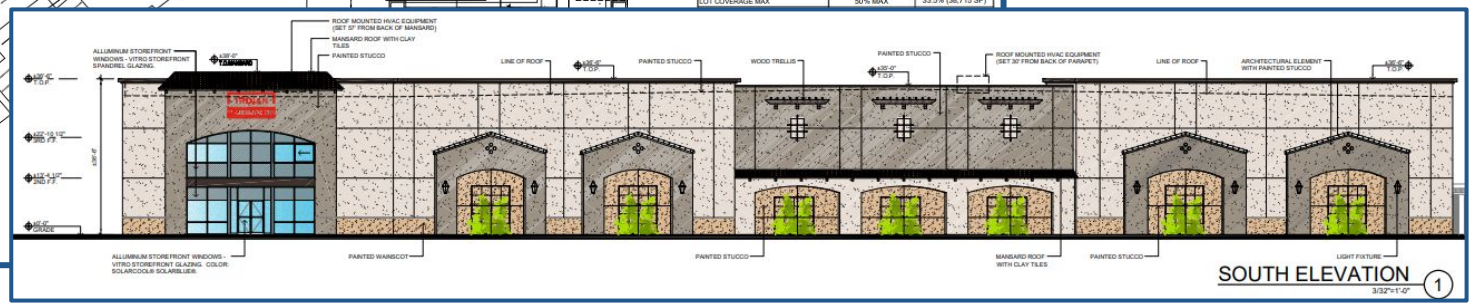
Industrial Project
Under Construction

2111 Auto Center Drive

- PZ No. 22-200-03
- New three-story mini-storage facility of approximately 99,945 square feet



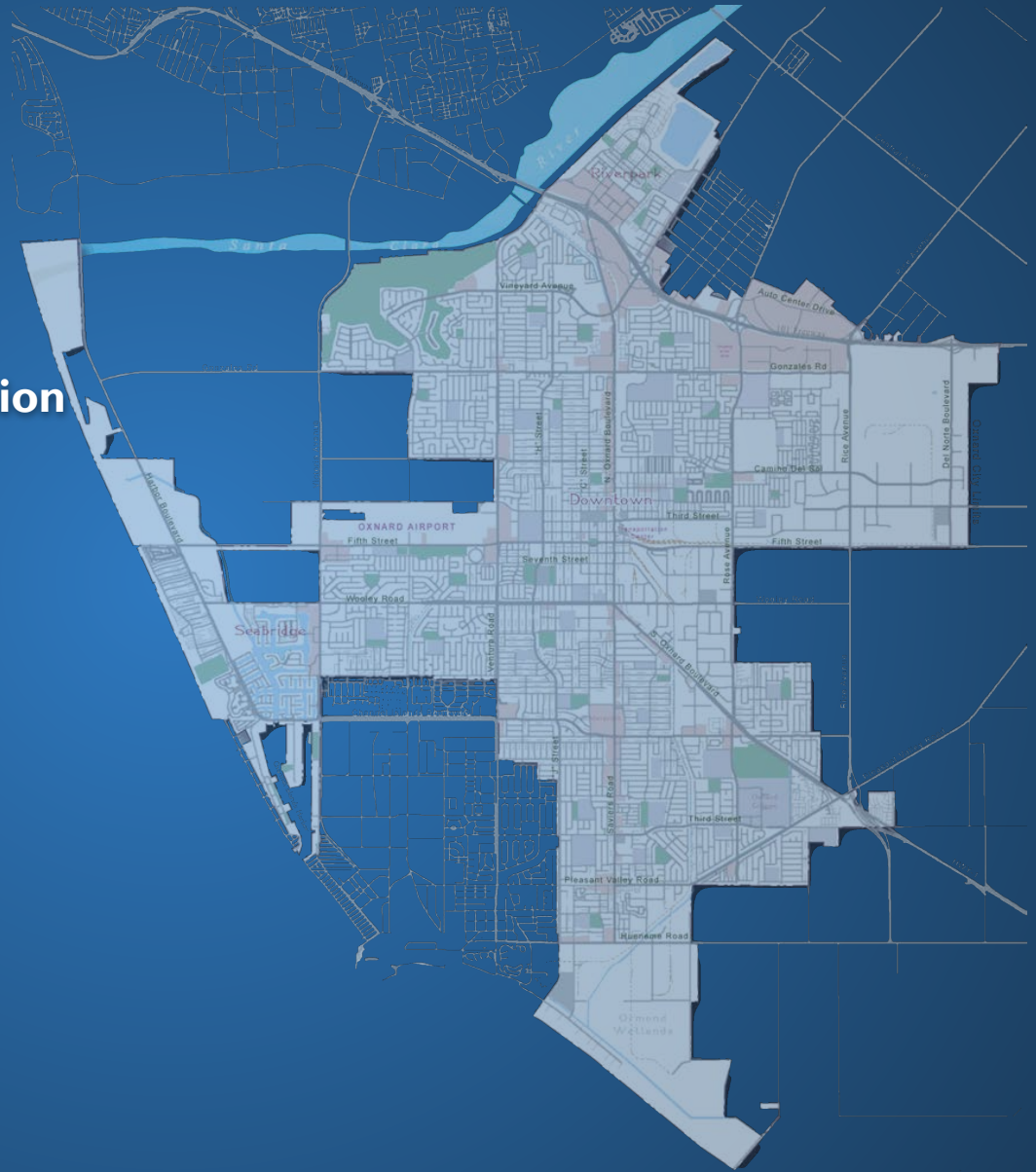
SITE DATA	
APN	144-0-150-025
LOT AREA	115,238 SQ. FT.
TOTAL GROSS BLDG. AREA	99,945 SQ. FT.
ZONE	COMMERCIAL/MANUFACTURING
SPECIFIC PLAN	ROSE SANTA CLARA SPECIFIC PLAN
BUILDING DATA	
CONSTRUCTION TYPE	TYPE IIB - NON COMBUSTIBLE
SPRINKLER SYSTEM	YES, NFPA 13
SELF STORAGE OCCUPANCY TYPE	S-1
OFFICE OCCUPANCY TYPE	B
RESIDENTIAL OCCUPANCY TYPE	R-3
BASIS OF DESIGN	
ZONE	COMMERCIAL/MANUFACTURING
SPECIFIC PLAN	ROSE SANTA CLARA SPECIFIC PLAN
BETACKS	REQUIRED PROVIDED
FRONT	30 FT. 30 FT.
SIDE	0 FT. 0 FT.
REAR	20 FT. 20 FT.
MAX HEIGHT	35 FT. T30
LOT COVERAGE MAX	50% MAX 33.5% (88,715 SF)



SOUTH ELEVATION ①
3/22/17-0'

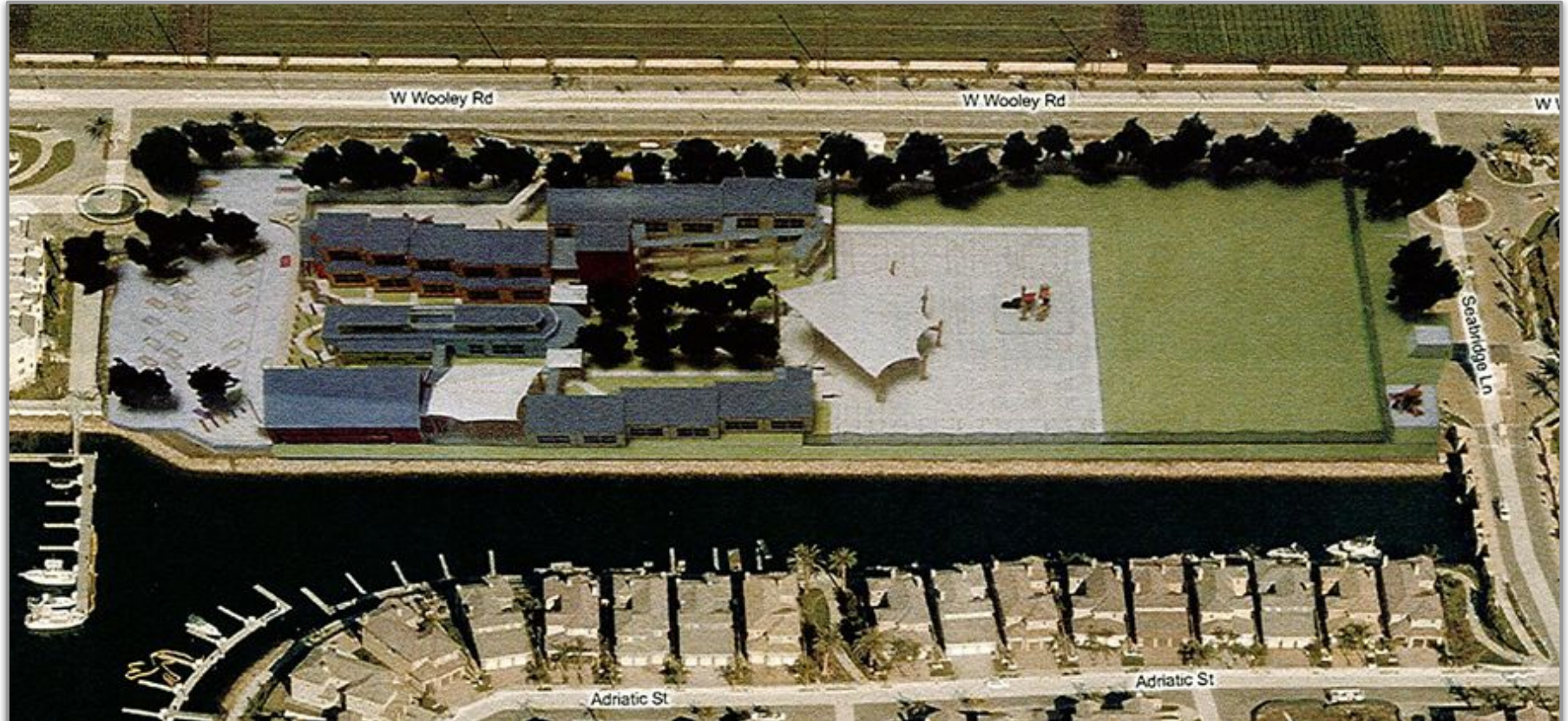
Institutional Developments Overview

1. Oxnard School District
2. Rio Del Valle School Expansion



4050 West Wooley Road

- A proposed Seabridge K-5 Elementary School



(conceptual design, requires Coastal Commission staff review)

Rio Del Valle Middle School Existing Campus Expansion Master Plan

- Annexation
- General Plan Amendment (to change the City Urban Restriction Boundary, SOAR land designation, Sphere of Influence, land use designation)
- Pre-zoning the property
- Proposed District Transportation and Bus Maintenance and Parking facilities



Specific Plan Projects

1. Teal Club

2. Northeast Community Specific Plan Sub-Neighborhood plan

3. Riverpark Projects

- a. The Landing
- b. Ventura Road Electronic Billboard
- c. RiverPark Blvd Electronic Billboard
- d. The Pointe Apartments

4. Wagon Wheel Village

- a. Condos
- b. Park Place



1. Teal Club Specific Plan

Ventura Road & Teal Club Road

- 990 dwelling units (148 affordable)
- 55,000 sf commercial space

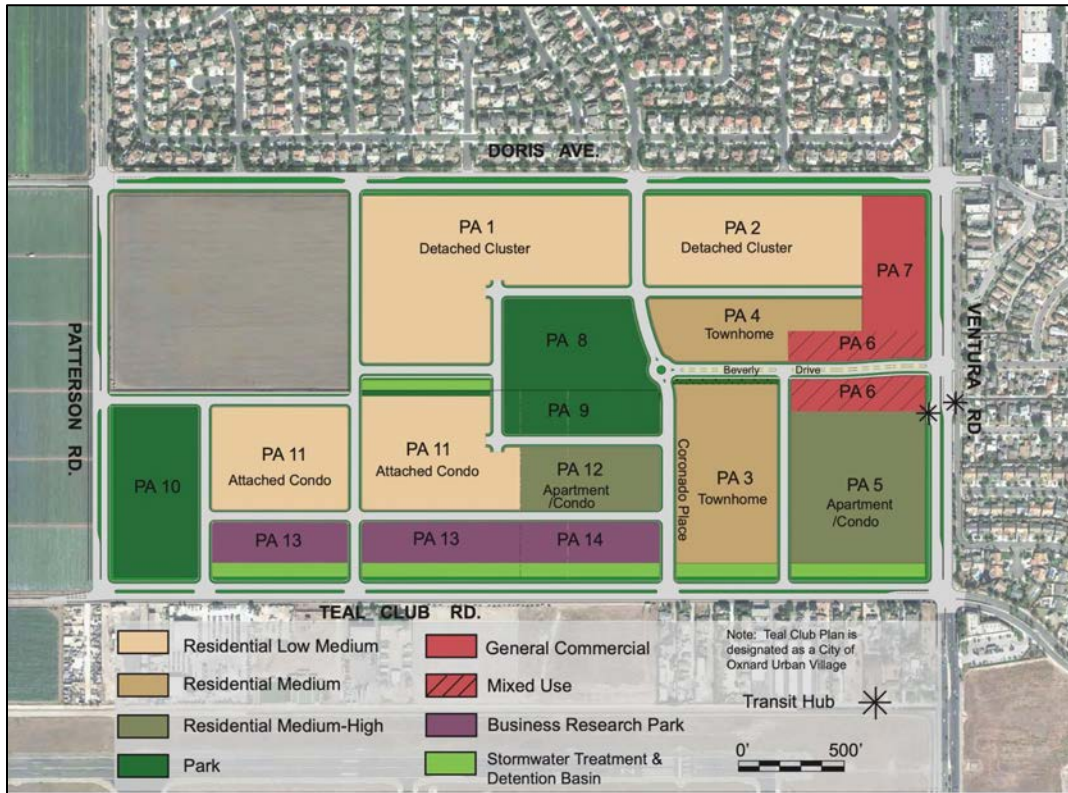


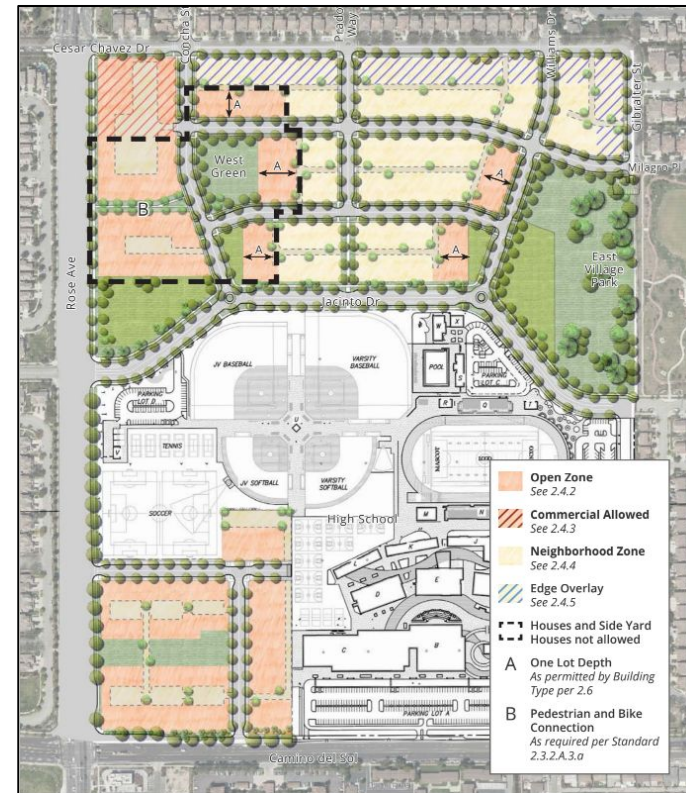
Table 3-1
Land Use Table

Land Use	Maximum Density	TOTAL PLANNED			
		Acres (1)	Units (2)	Density	Bldg. Sq. Ft.
RESIDENTIAL USES & LAND USE CATEGORY:					
PA-1 Detached Cluster - Residential Low Medium	10 DU/Ac.	17.52	140	8 DU/Ac.	-
PA-2 Detached Cluster - Residential Low Medium	10 DU/Ac.	10.01	80	8 DU/Ac.	-
SUBTOTAL Detached Cluster Units	-	27.53	220	-	-
PA-3 Attached or Detached Townhome - Residential Medium	18 DU/Ac.	9.6	145	15 DU/Ac.	-
PA-4 Attached or Detached Townhome - Residential Medium	18 DU/Ac.	5.54	88	16 DU/Ac.	-
PA-5 Attached Apartment/Condo - Residential Medium High	30 DU/Ac.	10.57	240	23 DU/Ac.	-
PA-11 Attached or Detached Condo - Residential Low Medium	12 DU/Ac.	15.64	167	11 DU/Ac.	-
PA-12 Attached Apartment/Condo - Residential Medium High	30 DU/Ac.	4.43	100	23 DU/Ac.	-
Commercial/Mixed Use (Residential component)	-	0.00	30	-	-
SUBTOTAL Multi-Family	-	45.78	770	-	-
TOTAL RESIDENTIAL	-	73.31	990	-	-
PARKS & OPEN SPACE					
PA-8 Community Park - Phase 1 Portion (includes HOA amenity)	-	6.50	0	-	5,000
PA-9 Community Park - Phase 2 Portion	-	3.50	0	-	-
PA-10 Community Park - Phase 2	-	7.38	0	-	-
Beverly Dr. Greenbelt	-	0.38	0	-	-
SUBTOTAL Parks & Open Space	-	17.76	0	-	5,000
COMMERCIAL/MIXED USE					
PA-6 Commercial/Mixed Use - General Commercial	-	4.35	0	-	10,000
PA-7 Village Commercial - General Commercial	-	4.43	0	-	45,000
SUBTOTAL Commercial/Mixed Use	-	8.78	0	-	55,000
LIGHT INDUSTRIAL					
PA-13 Business Research Park	-	6.19	0	-	88,000
PA-14 Business Research Park	-	2.92	0	-	44,000
SUBTOTAL Light Industrial	-	9.11	0	-	132,000
ARTERIAL ROADWAYS					
Ventura Road	-	2.82	0	-	-
Doris Avenue	-	2.80	0	-	-
Patterson Road	-	0.30	0	-	-
Teal Club Road	-	7.20	0	-	-
SUBTOTAL Arterial Roadways	-	13.12	0	-	-
INTERIOR ROADWAYS & MISC.					
Interior Roadways show in Fig 2-1	-	22.18	0	-	-
Stormwater Treatment / Detention Basins	-	5.46	0	-	-
SUBTOTAL Interior Roadways & Misc.	-	27.64	0	-	-
TOTAL PROJECT	-	149.72	990	-	192,000

2. Northeast Community Specific Plan

Maulhardt/Stiles NECSP Sub-Neighborhood Plan

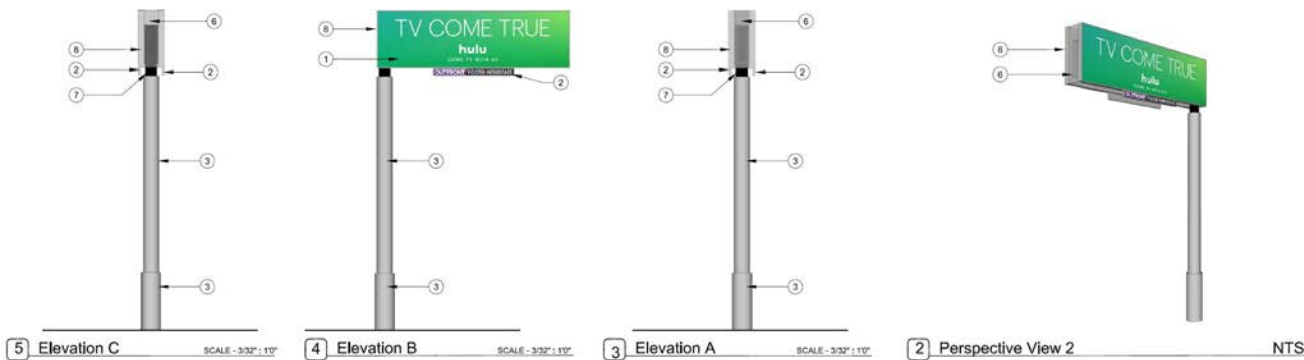
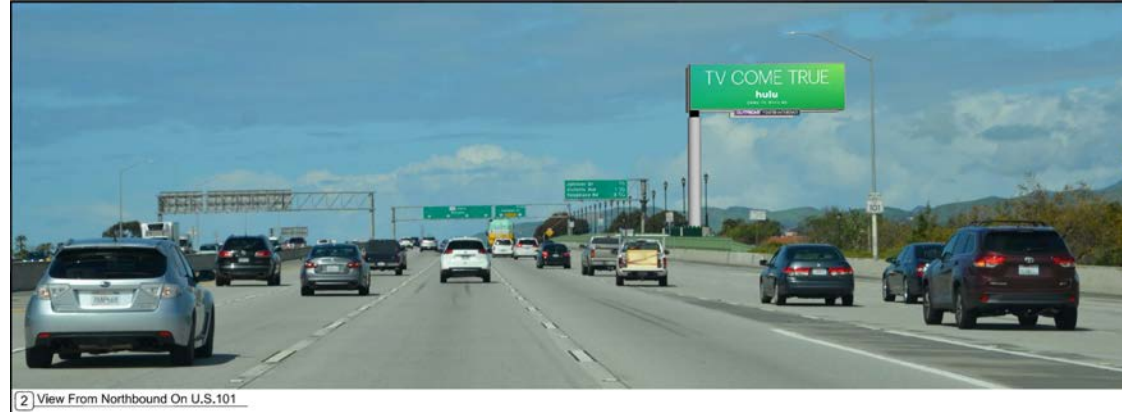
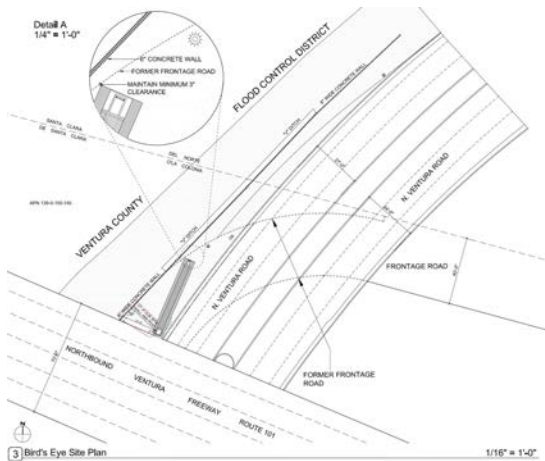
- Sub-Neighborhood Plan would create a framework for the future subdivision and development of approximately 500-950 residential units, a high school, and commercial development on the 107 acre project site.
- Camino Del Sol High School Project (Oxnard Union School District Project)



3b. RiverPark - Ventura Road Electronic Billboard

Specific Plan - Other Under Construction

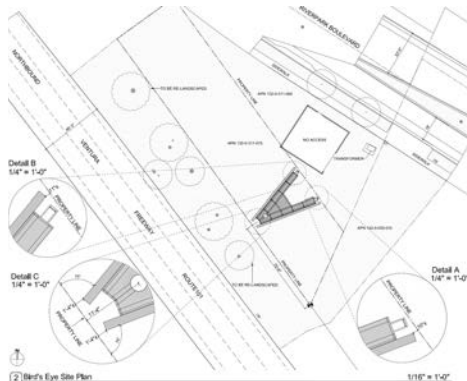
- Proposal for an 80-foot tall Freeway Adjacent Digital Display Billboard with a sign face of 14.5 feet in height and 48.5 feet in length (approximately 700 square feet per side)
- Development Agreement
- Street Vacation of Sign Area



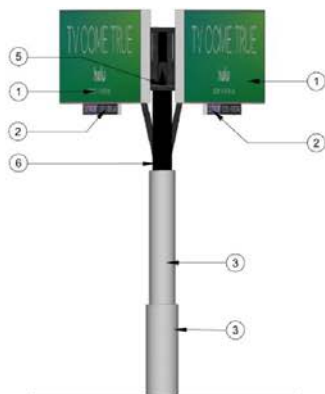
3c. RiverPark - Riverpark Boulevard Electronic Billboard

Specific Plan - Other
Approved

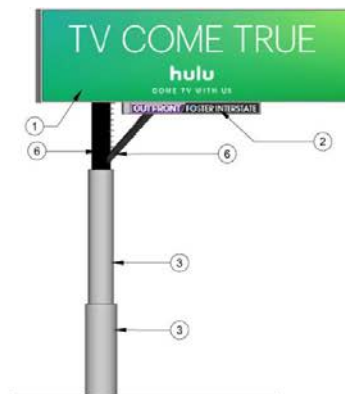
- Proposal for an 60-foot tall Freeway Adjacent Digital Display Billboard with a sign face of 14.5 feet in height and 48.5 feet in length (approximately 700 square feet per side)
- Specific Plan Amendment to allow for Freeway Adjacent Digital Display Billboards within the RiverPark Specific Plan Area
- Development Agreement



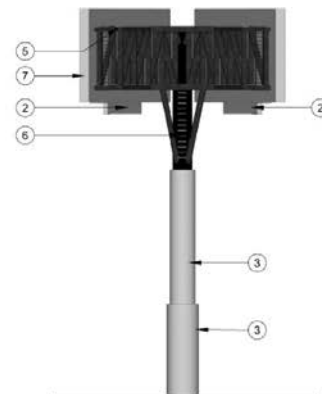
2 View From Northbound On U.S.101



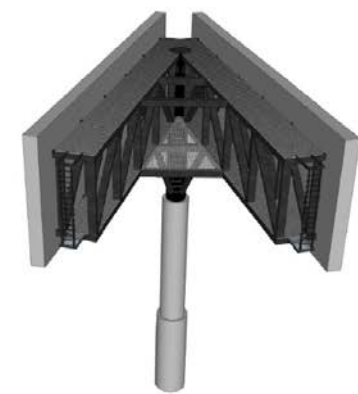
5 Elevation A SCALE - 1/8" = 1'0"



4 Elevation B SCALE - 1/8" = 1'0"



3 Elevation C SCALE - 1/8" = 1'0"



2 Perspective View 2 NTS

3d. RiverPark - The Pointe Apartments

Specific Plan Mixed-Use Projects
Approved

- **Town Center Drive & Oxnard Blvd**
Proposed 5-story, 280 unit apartment complex.



OXNARD: THE POINTE
SHEA PROPERTIES
MIDCEN DEVELOPMENT DESIGN
MIDCEN DEVELOPMENT DESIGN
MIDCEN DEVELOPMENT DESIGN

BUILDING PROSPECTIVE
SOUTHBOUND CLYDE RIVER

A-3

4. Wagon Wheel - The Village

Specific Plan Mixed-Use Projects Under Construction

- 1,500 residential units
- 50,000 sf commercial space
- Parks, transit area, and multi-use path



4a. Wagon Wheel - Condos

Specific Plan Mixed-Use Projects
Under Construction



Oxford Flats (lots 7&8)

- 96 of 144 condos built

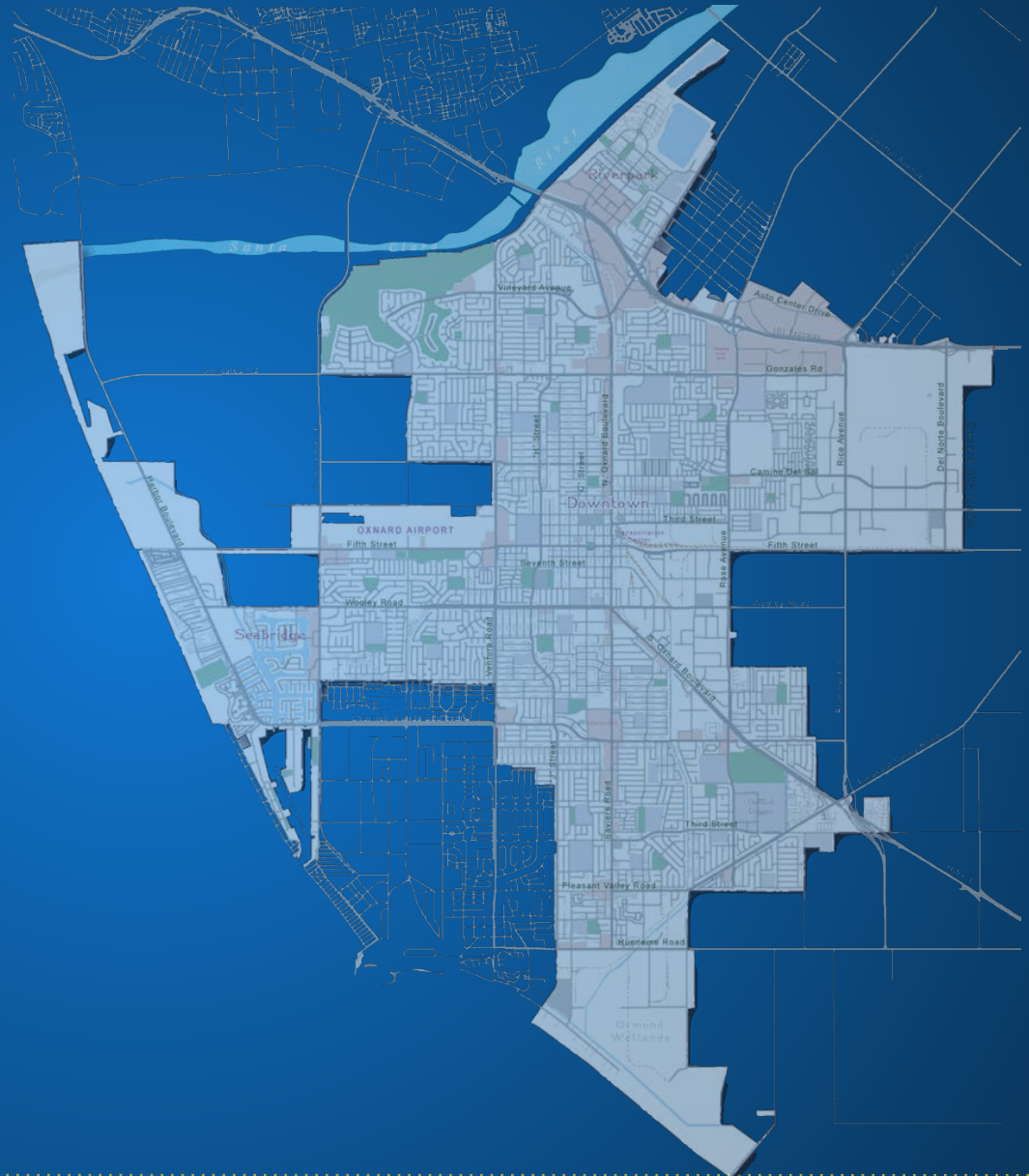


Mayfair (lots 4 & 10)

- 56 of 88 condos built

Mixed-Use Developments Overview

I. Rio Urbana



1. Rio Urbana

2714 East Vineyard Avenue

- 167 units (20 affordable)
- 15,000 sf office building



Downtown Developments Overview

An aerial photograph of a city's downtown area, showing a dense grid of streets, buildings, and green spaces. The image is used as a background for a list of development projects. The list is positioned in the upper-left to middle-left portion of the image, with the text in a bold, yellow, sans-serif font. The background shows a mix of residential and commercial buildings, with a large green park area visible in the lower-right quadrant. The overall scene is a detailed view of an urban environment.

1. The Palm Apartments
2. C Street Apartments
3. Sandpiper Building
4. 613- 643 South C Street Apartments
5. 637 & 643 South C Street Apartments
6. 140 Palm Mixed-Use
7. Aspire Apartments
8. First & A St Apartments

115 Palm Drive

- A proposed 5-story podium building
- Request to remodel an existing single-story, commercial office building
- Construct two, 2-bedroom residential units. One of the units (696 square feet) is proposed over the single-story, 985 square-foot, commercial office building and the second residential unit (767 square feet) is proposed over a detached three-car garage.
- The detached dwelling units are designed with a courtyard and common staircase that will lead to an upstairs bridge landing with access to each unit's front door



2. C Street Apartments

761 South C Street

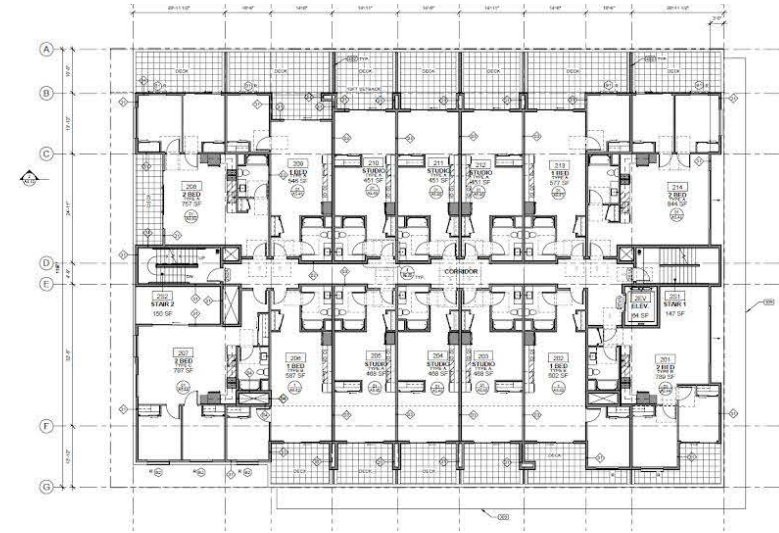
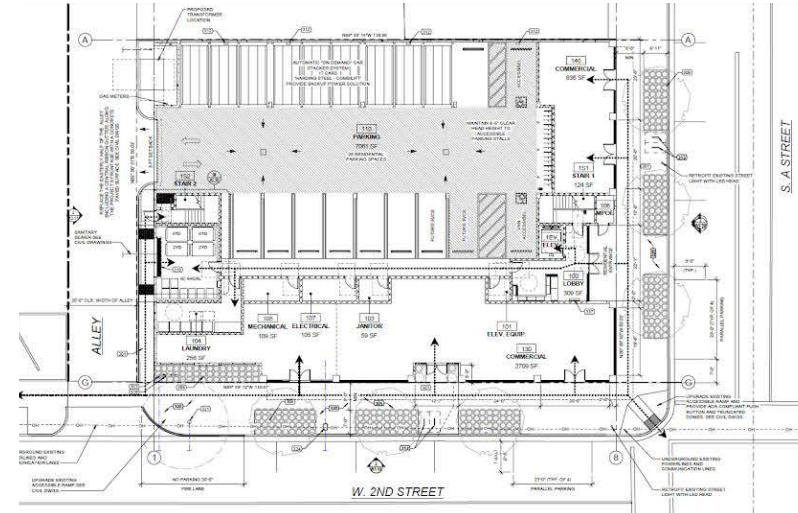
- Proposed 175 units; 18 affordable
- 1,145 sf retail space



3. Sandpiper Building

155 S. A Street

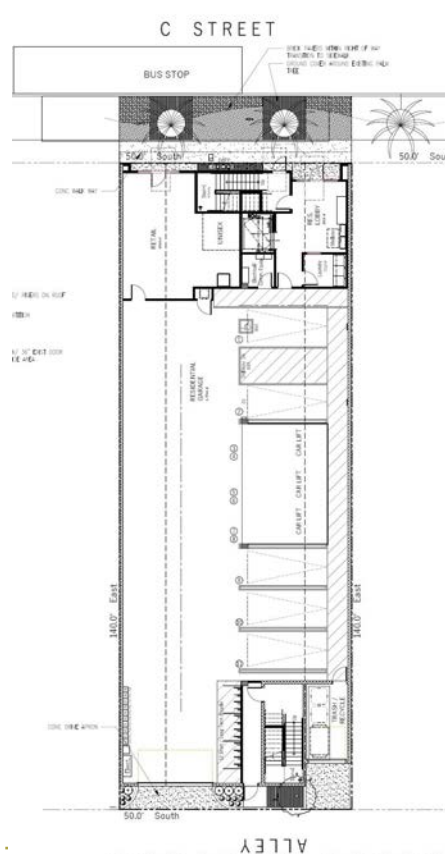
- Proposed demolition of an existing, two-story, 13,200 square-foot commercial building on a 14,000 square-foot (.32 acre) lot in the Downtown-General Zone and Construction of a 5-story, 54,320 square-foot, mixed use apartment building.
- 56 units (a mix of studio, one-bedroom, and two-bedroom and 6 deed restricted [3 very low and 3 low income]).
- 2 commercial units totaling 3,545 square-feet on the ground floor.



4. 613 South C Street Apartments

Downtown Mixed-Use
Proposed

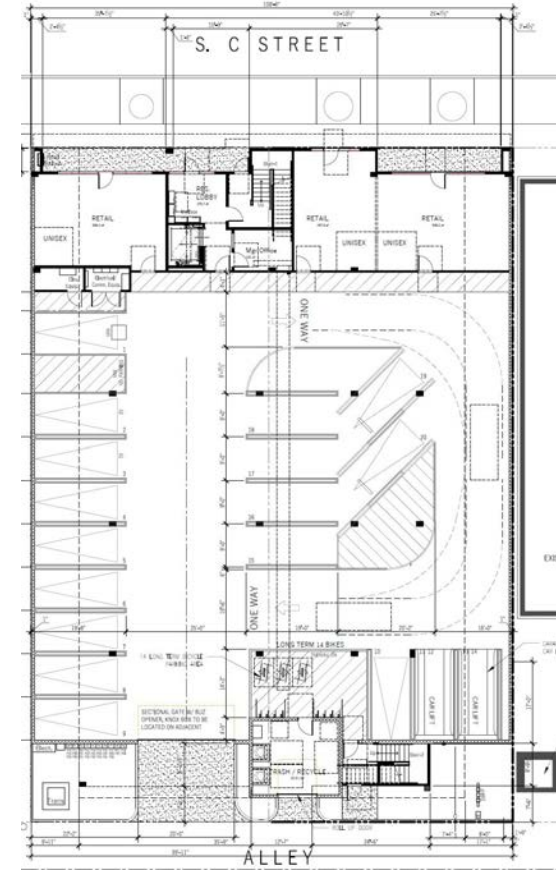
- Three 5-Story mixed use buildings
- Ground floor commercial unit and parking
- 20 - 1 and 2 bedrooms in each building
- 2 deed restricted units, a very low and a low income in each building



5. 637 & 643 South C Street Apartments

Downtown Mixed-Use
Proposed

- 5-Story mixed use buildings
- Ground floor commercial unit and parking
- 36 - 1 and 2 bedrooms in each building
- 4 deed restricted units

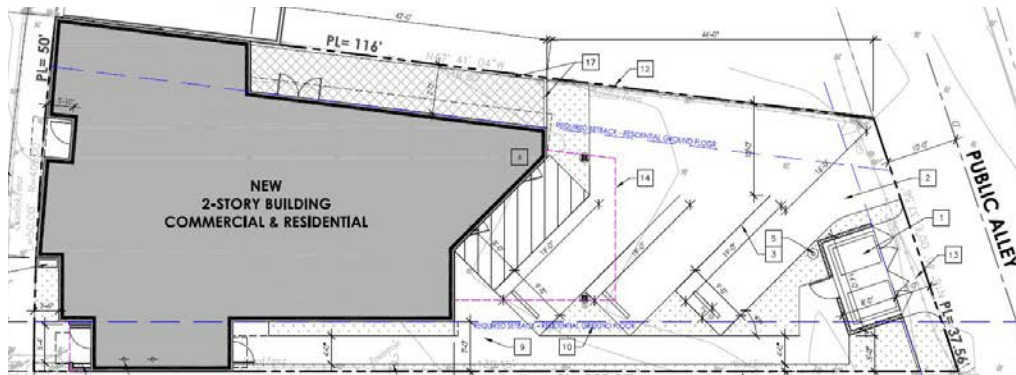
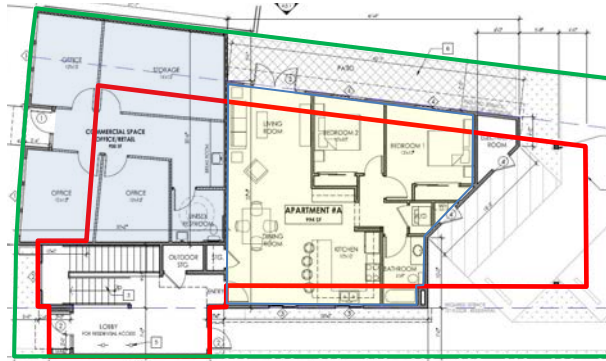


6. Palm Drive - Mixed Use

Mixed-Use
Proposed

140 Palm Drive

- 3 Apartment Units
 - One - 2 Bedroom (994 sf)
 - Two - 1 Bedroom (675 sf/700 sf)
- 900 sf office building



7. Aspire Apartments

Downtown Mixed-Use
Approved

536 Meta Street

- A proposed 5-story podium style building
- 88 units
- 100% Affordable
- 2,781 SF of common space

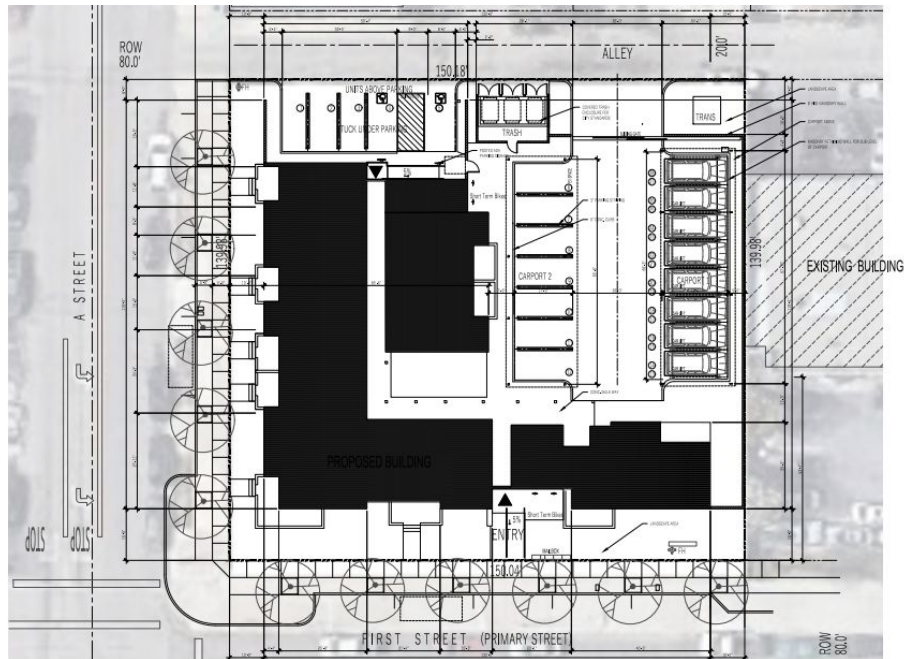


8. First & A St Apartments

Residential
Approved

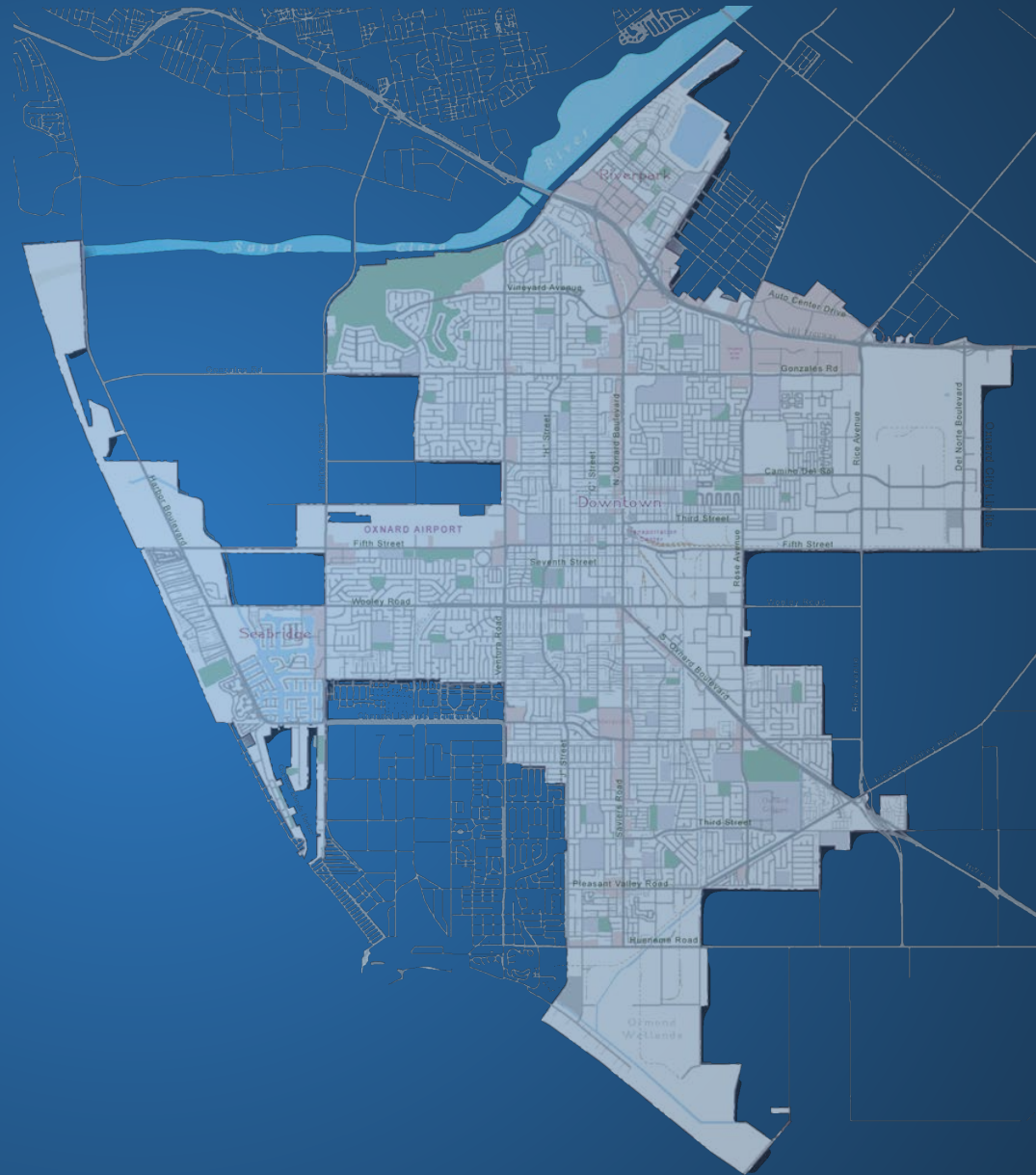
137 First Street

- 43 Apartment Units
- 38 - 1 Bedroom
- 5 - 2 Bedroom



Commercial Cannabis Retail Permits

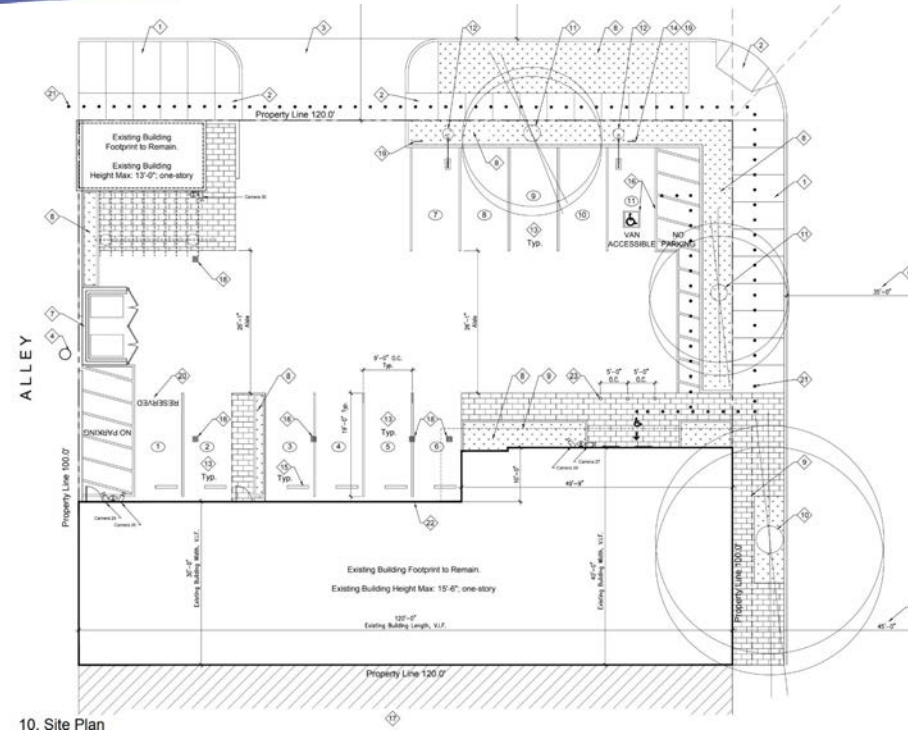
1. Kind Lifestyle Market
2. Haven #8
3. Blue Enterprises Oxnard
4. 99 High Tide



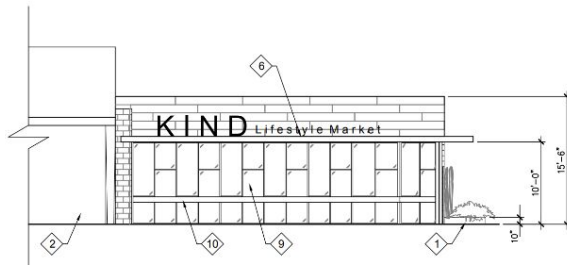
1. Kind Lifestyle Market LLC dba Kind Lifestyle Market

911 South Oxnard Boulevard

- PZ No. 21-516-11
- A proposed cannabis retail sales facility

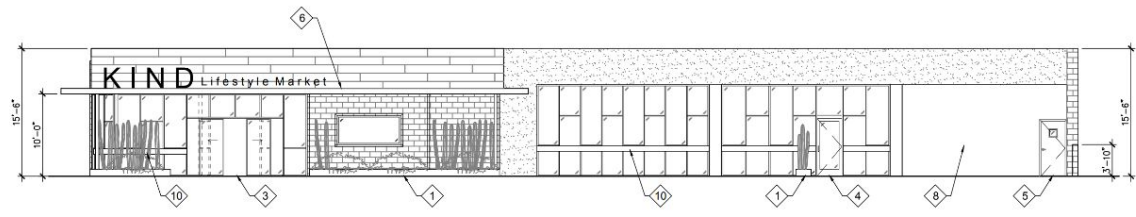


10. Site Plan



10. Cannabis Retail - East Elevation

Scale: 1/8" = 1'-0"



4. Cannabis Retail - North Elevation

Scale: 1/8" = 1'-0"

2. Haven #8 LLC dba Haven

220 South A Street

- PZ No. 21-516-21
- A proposed cannabis retail sale facility



3. Blue Enterprises Oxnard, LLC dba Cookies Oxnard

Cannabis Retail Project
Under Construction

2655 North Vineyard Avenue

- (PZ No. 21-516-25)
- A proposed cannabis retail sale facility.



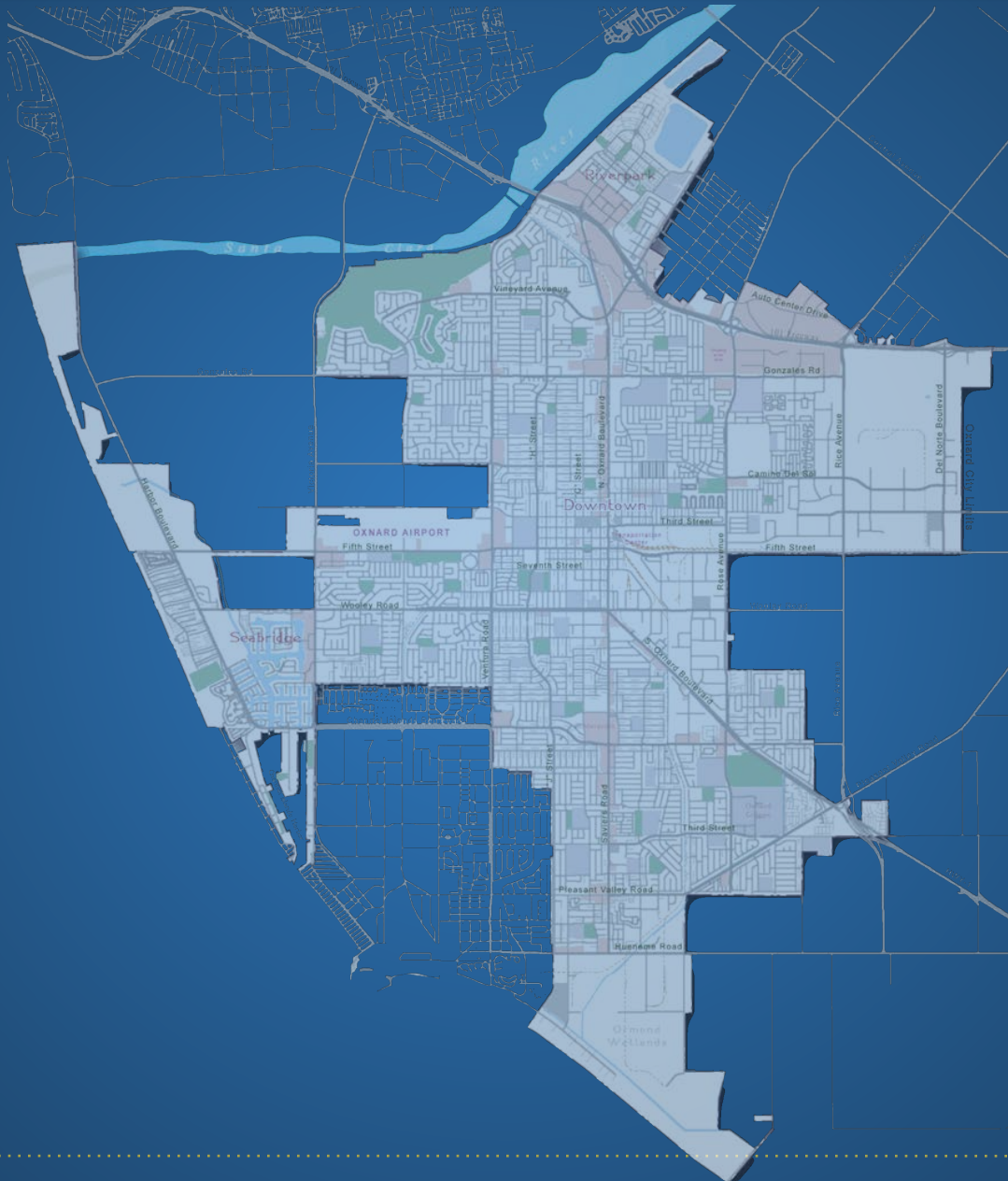
4. 99 High Tide, LLC. dba La Sirena

138 South A Street

- PZ No. 21-516-43
- A proposed cannabis retail sale facility



Policy Development



- The City is preparing a comprehensive amendment to the Local Coastal Program.
- The amendment will reflect updates to both the Coastal Land Use Plan (LUP) and Local Implementation Plan (LIP), the Coastal Zoning Ordinance.
- On February 20, 2024, the City Council approved a three (3) year agreement between the City and Dudek for a preparation of the comprehensive update to the Local Coastal Program, with an option for (1) one-year extension (Agreement No. 32400306).
- Public outreach is expected to occur throughout the LCP Amendment Process from 2024 to 2027.
- The first LCP Amendment Virtual Community Meeting occurred on May 22, 2024.



Comprehensive General Plan Update - 2045 City Vision Document

- Beginning with Housing Element update - 2020-2022.
 - Climate Action and Adaptation Plan (CAP) - 2020-2022; establishes background and sets policy/guidance and directives.
 - Oxnard 2045 General Plan Update - 2022 - 2025.
 - Creates community vision, direction, and policy approaches.
 - Comprehensive update to all State required General Plan Element Chapters: Land Use, Circulation, Safety/Hazards, Noise, Recreation/Parks, Open Space/Conservation, & Housing - builds upon updated plans and studies already completed.
 - Builds from CAP, additional of climate resilience.
 - Determination of optional elements, updates to existing 2030 General Plan chapters (military compatibility; sustainability, for example. Identification of new chapters and community needs.
 - Addresses new state mandates. For example, robust design and compatibility policies, to provide objective standards - retain City authority and discretion.
-

Ormond Beach Restoration Access Plan (OBRAP)

Policy Development



- The Coastal Conservancy, the City of Oxnard and The Nature Conservancy (Partners) have developed a preliminary plan in 2021 to restore coastal habitats at Ormond Beach and improve public access.
 - Project area encompasses approximately 650 acres.
 - Ormond Beach is considered by wetland experts to be the most important wetland restoration opportunity in southern California.
 - Unlike other coastal wetland restoration projects in southern California, there is room to restore the approximate extent of historic wetlands, provide surrounding upland habitat to complete the ecosystem and accommodate sea level rise.
 - The project received a Statutory Exemption for Restoration Projects Concurrence by the California Department of Fish and Wildlife project a 5-year Coastal Development Permit request for conservation, preservation and maintenance of the Ormond Beach area while the OBRAP is finalized and approved In January 2024, the project received a Statutory Exemption for Restoration Projects Concurrence by the California Department of Fish and Wildlife. In February 2024, the State Coastal Conservancy was awarded funding for planning and implementation of the first phase of the project.
-



oxnard.gov