



Charles Duppen
 "No Slogans Just Outstanding Service"
duppano@comcast.net
 Ph: 831-588-1689
<http://www.charlesduppen.com>

Cross Property Client Thumbnail



105 Palo Verde Terrace, Santa Cruz 95060

Class:	Res. Townhouse	List Price:	\$627,950	Status:	Active
Beds:	3	Sale Price:		MLS#:	ML81818237
Baths (F/P):	2 (1/1)	List Date:	10/30/2020	DOM:	45
SqFt:	1,237 SqFt (Tax)	COE Date:		HOA Fee:	\$620
Lot Size:	1,045 SqFt			X St:	Nobel Drive
Elem:	/ Santa Cruz City Elementary				
High:	/ Santa Cruz City High				

Public: Enter through a private courtyard into this 3 bedroom Upper Westside condominium featuring an open floor plan with your living room, dining and kitchen on the ground floor. The bedrooms enjoy an abundance of natural light. Whether you are looking for a beach hideaway, first home or investment you can not beat the location. UCSC, University Terrace Park, biking and hiking are all within a few strides. Public transit gives you quick and easy access to downtown, beaches and restaurants.



152 Palo Verde Terrace, Santa Cruz 95060

Class:	Res. Townhouse	List Price:	\$509,000	Status:	Active
Beds:	1	Sale Price:		MLS#:	ML81783958
Baths (F/P):	1 (1/0)	List Date:	02/24/2020	DOM:	234
SqFt:	870 SqFt (Tax)	COE Date:		HOA Fee:	\$620
Lot Size:	871 SqFt			X St:	Nobel Drive
Elem:	/ Santa Cruz City Elementary				
High:	/ Santa Cruz City High				

Public: New price! Ready to sell! Beautiful vacant two-story end-unit in Santa Cruz located just moments away from UCSC! This 1 bedroom, 1 bath home flows nicely and feels open from the ground floor living area up to the master bedroom retreat! 152 Palo Verde Terrace enjoys great light from the back yard patio area and the upstairs windows that face out toward the landscaped common areas. Conveniently located at the foothill of the University, this property is just walking distance to UCSC transportation and just minutes to Mission Blvd. where you can enjoy all of the shopping and restaurants that the major thoroughfare affords. Also close to the world class beaches of Santa Cruz for those new to the area. With granite counter tops and stainless appliances, this home is an excellent option for first time home buyers or for investors seeking upside in Santa Cruz's tight rental market. The property also sits in the Westlake School District which is an added bonus!



127 Peach Terrace, Santa Cruz 95060

Class:	Res. Townhouse	List Price:	\$705,000	Status:	Sold
Beds:	3	Sale Price:	\$721,000	MLS#:	ML81816177
Baths (F/P):	2 (2/0)	List Date:	10/17/2020	DOM:	16
SqFt:	1,194 SqFt (Tax)	COE Date:	12/04/2020	HOA Fee:	\$563
Lot Size:	2,352 SqFt			X St:	Nobel Drive
Elem:	/ Santa Cruz City Elementary				
High:	/ Santa Cruz City High				

Public: Imagine urban living in a tranquil and private setting in one of the most desirable neighborhoods. Recently renovated, spacious, airy, 3 bedroom 2 bath townhouse on the Upper Westside of Santa Cruz. Highly sought-after end-unit uniquely located within a green space with expansive grass views and private parking. Sunlit rooms, cozy wood-burning fireplace, new luxury vinyl plank floors, and sliding doors that open to a large private slate patio with storage shed. Caesarstone kitchen countertops with new fixtures, oversized sink, all new Stainless Steel appliances. Large bedrooms with sizable closets, Master Bedroom with en suite bathroom and a walk-in closet. New vertical blinds throughout the house. One block from bus stops. The Westside is an outdoor enthusiasts dream with numerous parks and nature preserves in the area. Less than a 10-minute drive to bakeries, wineries, breweries, shopping on Pacific Ave, West Cliff Dr., and Natural Bridges. Great place to call home or invest.



217 Palo Verde Terrace, Santa Cruz 95060

Class:	Res. Condominium	List Price:	\$635,000	Status:	Sold
Beds:	2	Sale Price:	\$640,000	MLS#:	ML81781764
Baths (F/P):	2 (1/1)	List Date:	02/06/2020	DOM:	3
SqFt:	1,046 SqFt (Tax)	COE Date:	02/24/2020	HOA Fee:	\$500
Lot Size:	SqFt			X St:	Nobel Drive
Elem:	/ Santa Cruz City Elementary				
High:	/ Santa Cruz City High				

Public: Absolutely every single inch of this beautiful home is up to date with high quality throughout. Kitchen is completely remodeled with custom granite. Gas cooking, built-in microwave. Maple cabinets with pantry. Inside washer/dryer only 1.5 years old. Light floods in the living room and dining room areas from 2 large picture windows/sliding doors (double pane) with adjacent private patios. Flooring is hand scraped hardwood. Downstairs 1/2 bath complete remodel with custom tile. 2 spacious bedrooms upstairs with hardwood floors and completely remodeled bathroom with new fan/light/heater. Both bedrooms have custom closet organizers. Back bedroom overlooks green belt. Very quiet and private. Brand new forced air furnace (1 week ago). Convenient covered parking is nearby charming entrance + open parking with 1 included permit. Perfect for young professional single/family or UCSC student - invest -don't pay rent. 5 min walk to Bay Ave w/buses direct to campus. Or invest for a premium rental.



129 Peach Terrace, Santa Cruz 95060

Class:	Res. Condominium	List Price:	\$625,000	Status:	Sold
Beds:	3	Sale Price:	\$650,000	MLS#:	ML81803902
Baths (F/P):	2 (2/0)	List Date:	07/31/2020	DOM:	6
SqFt:	1,194 SqFt (Tax)	COE Date:	09/08/2020	HOA Fee:	\$563
Lot Size:	SqFt			X St:	Nobel
Elem:	/ Santa Cruz City Elementary				
High:	/ Santa Cruz City High				

Public: Beautiful, completely renovated 3 BR 2 BA townhouse on the upper west side of Santa Cruz. Highly desirable single-level, end unit with interior location and private parking. Sunlit rooms, new floors, cozy fireplace and sliding doors that open to an enclosed courtyard bordered by mature landscaping. New natural stone kitchen countertop, contemporary white cabinets, matching tile backsplash and a new side-by-side fridge. Both bathrooms were just fully remodeled, including a new shower & bath, wall tile and vanity. Walk to UCSC, the Barn Theatre, and a spacious University Terrace Park with tennis courts, bike paths and walking trails. Less than a ten minute drive to west side cafes and restaurants, the beach, and downtown shopping on Pacific Avenue.



205 Palo Verde Terrace, Santa Cruz 95060

Class:	Res. Townhouse	List Price:	\$620,000	Status:	Sold
Beds:	3	Sale Price:	\$620,000	MLS#:	ML81816095
Baths (F/P):	2 (1/1)	List Date:	11/04/2020	DOM:	10
SqFt:	1,237 SqFt (Tax)	COE Date:	12/11/2020	HOA Fee:	\$610
Lot Size:	1,045 SqFt			X St:	Nobel
Elem:	Westlake Elementary / Santa Cruz City Elementary				
High:	/ Santa Cruz City High				

Public: Welcome Home to the Upper West Side! A fine location suitable for coastal living close to nature, downtown activities and the University of Santa Cruz. This home offers a sun filled, open floor plan with 3 bedrooms, 1.5 baths, two private patios courtyards, carport parking, interior laundry and a pool! Not on the market for many years this home has been well maintained and awaits your finishing touches. The Roundtree development offers an outdoor pool and charming clubhouse with walking trails and view benches. Close to everything the Westside of Santa Cruz has to offer including many restaurants, Natural Bridges State Park, SC Beach Boardwalk and the many coastal beaches! Close by hiking trails in Pogonip, minutes to the UCSC campus, University Terrace Park, and located in the Westlake Elementary district. A great home, vacation getaway, or investment opportunity! Priced to Sell Fast, Hurry!



123 Peach Terrace, Santa Cruz 95060

Class:	Res. Townhouse	List Price:	\$619,000	Status:	Sold
Beds:	3	Sale Price:	\$618,000	MLS#:	ML81792228
Baths (F/P):	2 (1/1)	List Date:	05/15/2020	DOM:	31
SqFt:	1,246 SqFt (Tax)	COE Date:	06/26/2020	HOA Fee:	\$563
Lot Size:	1,045 SqFt			X St:	Nobel
Elem:	Westlake Elementary / Santa Cruz City Elementary				
High:	Santa Cruz High / Santa Cruz City High				

Public: Superior Location with beautiful views of the common area greenbelt and walking paths this super clean Upper Westside Townhome is located within walking distance to UCSC (.5 mile), Sought after Westlake Elementary (.7 mile), Historic Pogonip (1.5 mile) & University Terrace Park and small dog park (.5 mile). Excellent Rental History with current Rents of \$4000/month. The Open kitchen/living design with abundant counter and cabinet space allows for a very usable and flexible living space. Featuring two private patios to enjoy a morning coffee, after-work glass of wine or weekend BBQ. Or walk out the gate and take a leisurely stroll through the complex to wind down after a long day. Lots of potential here with many capital improvements throughout the Complex in recent years. Popular with investors, parents of UCSC students and first time buyers but anyone looking for a good value will appreciate this wonderful townhome. Viewing plan shown in following the link <http://tiny.cc/z7s4pz>



124 Peach Terrace, Santa Cruz 95060

Class:	Res. Townhouse	List Price:	\$618,000	Status:	Sold
Beds:	2	Sale Price:	\$620,000	MLS#:	ML81792618
Baths (F/P):	2 (2/0)	List Date:	05/14/2020	DOM:	16
SqFt:	1,194 SqFt (Tax)	COE Date:	07/09/2020	HOA Fee:	\$563
Lot Size:	2,222 SqFt			X St:	Nobel
Elem:	Westlake Elementary / Santa Cruz City Elementary				
High:	Santa Cruz High / Santa Cruz City High				

Public: The art of carefree living and a popular Upper Westside locale in this delightful 2+BR/2BA Baytree townhome w/desirable end-unit location, just one shared wall and a sought-after single-level design. Sun-drenched living, dining and kitchen areas have a welcoming and open feel for ample cook space, dining and conversation areas. New carpets and paint let you move right in. Kitchen boasts plenty of solid oak cabinets, some w/glass faces, appliance garage, breakfast bar seating, and pantry. Good-sized windows and a slider invite you outside to a private fenced patio, just right for morning coffee, a little gardening and storing bikes. Thoughtful amenities like built-in bookcases, inside lndry, extra closets, forced air heating, and den that doubles as a 3rd BR. Baytree sits below the entrance to UCSC, giving you easy access to trails and public transportation, w/ endless hiking in Pogonip Park, Moore Creek Preserve, mountain bike trails, University Terrace Park and a dog park, all close by



144 Peach Terrace, Santa Cruz 95060

Class:	Res. Townhouse	List Price:	\$615,000	Status:	Sold
Beds:	3	Sale Price:	\$618,000	MLS#:	ML81802194
Baths (F/P):	2 (2/0)	List Date:	07/21/2020	DOM:	5
SqFt:	1,194 SqFt (Tax)	COE Date:	08/21/2020	HOA Fee:	\$563
Lot Size:	2,178 SqFt			X St:	Nobel

Elem: **Bay View Elementary** / Santa Cruz City Elementary
 High: **Santa Cruz High** / Santa Cruz City High

Public: The Westside is calling, and this newly refurbished Baytree townhome should have you listening. Easy living with a sought-after end-unit location and just one shared wall, single-level convenience, and a freshly updated interior with new carpets and paint to welcome you in. Three bedrooms, all with good-sized windows and closets, wide open living and kitchen areas, and a generous patio to expand your living space. Carport parking close to the front door makes it easy getting groceries inside. A handy kitchen pantry, inside laundry, forced air heating, extra closets and other thoughtful touches. Enjoy all the educational and recreational perks of UCSC, coveted Westlake Elementary, the Arboretum, University Terrace Park and a dog park, all just minutes away. Quick access to hiking trails through Pogonip and the Moore Creek Preserve, or hop on the bike and you've got all the fun Westside pubs, wineries, restaurants and beaches calling your name. This is the time, and this is the place!



109 Torrey Pine Terrace, Santa Cruz 95060

Class:	Res. Condominium	List Price:	\$589,500	Status:	Sold
Beds:	2	Sale Price:	\$585,000	MLS#:	ML81801474
Baths (F/P):	2 (2/0)	List Date:	07/18/2020	DOM:	2
SqFt:	1,012 SqFt (Tax)	COE Date:	08/03/2020	HOA Fee:	\$563
Lot Size:	SqFt			X St:	Nobel

Elem: **Bay View Elementary** / Santa Cruz City Elementary
 High: **Santa Cruz High** / Santa Cruz City High

Public: Terrific Unit in Bay Tree near UCSC and Westlake School and pond. Very nicely appointed living room with built-in cabinets and custom wine refrigerator.

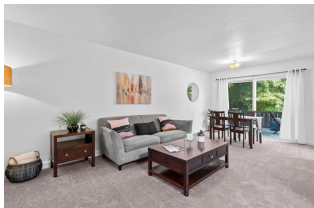


142 Castillion Terrace, Santa Cruz 95060

Class:	Res. Townhouse	List Price:	\$575,000	Status:	Sold
Beds:	2	Sale Price:	\$590,000	MLS#:	ML81777282
Baths (F/P):	1 (1/0)	List Date:	12/13/2019	DOM:	10
SqFt:	987 SqFt (Tax)	COE Date:	01/24/2020	HOA Fee:	\$620
Lot Size:	1,786 SqFt			X St:	Nobel

Elem: / Santa Cruz City Elementary
 High: / Santa Cruz City High

Public: This has got to be one of the best of these condos...single level with large patio on 2 sides and parking adjacent to gate which opens into your private yard. Great for pets with dog door already installed. Wood look tile floors in a light color that keeps interior bright, beautiful, and easy to clean. Great open layout with easy flow to all rooms. There is an outdoor shower for when you get back from surfing! This would work great for any buyer looking for single level living or a student or professor at UCSC which is walking distance away. Kitchen and bath are very nicely updated, so you can move in without doing any work. There is a large pool that is part of this HOA. Tennis courts are nearby, along with dog park and play area for kids - in fact great area for long hikes with Pogonip, UCSC, and Grey Whale Ranch all within reach and stretching out for miles. Make this your new home and discover the Upper Westside.



128 Palo Verde Terrace, Santa Cruz 95060

Class:	Res. Townhouse	List Price:	\$569,000	Status:	Sold
Beds:	2	Sale Price:	\$560,000	MLS#:	ML81804681
Baths (F/P):	2 (1/1)	List Date:	08/06/2020	DOM:	46
SqFt:	990 SqFt (Tax)	COE Date:	10/21/2020	HOA Fee:	\$618
Lot Size:	828 SqFt			X St:	Nobel Drive

Elem: / Santa Cruz City Elementary
 High: / Santa Cruz City High

Public: Highly sought after end unit featuring private, scenic view deck looking through the canyon all the way to the ocean! This is a very clean 2 bedroom 1.5 bathroom unit that has new carpet and paint throughout. The kitchen and living rooms areas are downstairs and both bedrooms are located upstairs with the master having direct access to the full bathroom. Laundry is located in the kitchen with stackable washer/dryer unit. Will make a great first time home, vacation getaway, or investment opportunity! The location is very close to everything the Westside of Santa Cruz has to offer including many restaurants, the highly recognized Humble Sea Brewery, Wilder Ranch, Natural Bridges State Park, SC Beach Boardwalk and the many coastal beaches! Several walking paths and trails near the UCSC campus and located in the Westlake Elementary district. The outside deck area really makes this property stand out from others!



135 Torrey Pine Terrace, Santa Cruz 95060

Class:	Res. Townhouse	List Price:	\$565,000	Status:	Sold
Beds:	2	Sale Price:	\$565,000	MLS#:	ML81803461
Baths (F/P):	2 (1/1)	List Date:	07/29/2020	DOM:	26
SqFt:	1,012 SqFt (Tax)	COE Date:	09/23/2020	HOA Fee:	\$563
Lot Size:	697 SqFt			X St:	Nobel

Elem: / Santa Cruz City Elementary
 High: / Santa Cruz City High

Public: This cozy West Santa Cruz townhouse is waiting for you! It is ideally located just 2 miles from the beach and Downtown, and less to UC Santa Cruz. It features a desirable floor plan with both bedrooms, full bath and laundry upstairs, along with open living/dining space with two large sliders that fill the area with natural light. The spacious patio is your private oasis for gardening or entertaining. The entire interior has been freshly painted and is equipped with a new bathtub and new water heater.



141 Torrey Pine Terrace, Santa Cruz 95060

Class:	Res. Townhouse	List Price:	\$555,000	Status:	Sold
Beds:	2	Sale Price:	\$555,000	MLS#:	ML81789892
Baths (F/P):	2 (1/1)	List Date:	04/21/2020	DOM:	0
SqFt:	1,088 SqFt (Other)	COE Date:	06/02/2020	HOA Fee:	\$560
Lot Size:	610 SqFt			X St:	Nobel
Elem:	/ Santa Cruz City Elementary				
High:	/ Santa Cruz City High				

Public: Beautifully refurbished townhouse-style unit near UCSC! Perfect for first time home buyer or the smart investor. This cozy home features a desirable reverse floor plan with both bedrooms and full bath, along with extra storage and laundry room downstairs. Large front bedroom has mirrored closet doors and a slider leading out to the inviting enclosed patio. Upstairs is a spacious, light-filled (two skylights) open living room, dining room and kitchen. So much flexibility here! Living room slider opens to a sweet balcony patio with views of the trees, and the birds and the bees! Entire interior has been freshly painted, with new flooring in front bedroom. Both bathrooms and kitchen have luxury vinyl that looks just like wood! Kitchen has elegant new granite counter tops, sink, faucet, range, and light fixtures. Half bath has new marble vanity top and lighting. Full bath downstairs has new mirror and lighting. This sweet home is all spruced up and move in ready! Includes all appliances!



135 Palo Verde Terrace, Santa Cruz 95060

Class:	Res. Condominium	List Price:	\$550,000	Status:	Sold
Beds:	2	Sale Price:	\$550,000	MLS#:	ML81783816
Baths (F/P):	2 (1/1)	List Date:	02/26/2020	DOM:	0
SqFt:	1,046 SqFt (Tax)	COE Date:	03/12/2020	HOA Fee:	\$486
Lot Size:	SqFt			X St:	Nobel
Elem:	/ Santa Cruz City Elementary				
High:	/ Santa Cruz City High				

Public: Location location location. Beautifully refurbished home in the Santa Cruz Roundtree complex, very close to UCSC. This complex is more spread out and has an open feel. Indoor laundry area is in bathroom. Walking trails through out complex and off Nobel that lead through arroyos and around.



142 Palo Verde Terrace, Santa Cruz 95060

Class:	Res. Townhouse	List Price:	\$549,997	Status:	Sold
Beds:	2	Sale Price:	\$565,000	MLS#:	ML81817356
Baths (F/P):	1 (1/0)	List Date:	10/25/2020	DOM:	15
SqFt:	960 SqFt (Tax)	COE Date:	12/02/2020	HOA Fee:	\$618
Lot Size:	2,178 SqFt			X St:	Nobel
Elem:	Westlake Elementary / Santa Cruz City Elementary				
High:	/ Santa Cruz City High				

Public: Highly sought after single level end unit, with 2 bedrooms and 1 bathroom. This unit has only one common wall and features views of the green belt, arroyo, and an ocean peek from the kitchen, bedroom, and patio. It has been nicely updated with new kitchen appliances, laminate floors and carpets, paint, and new countertops in the kitchen and bathroom. Indoor laundry area for convenience, and there is a single carport in front of the unit with ample guest parking. The Roundtree complex has a nice pool and clubhouse with walking trails and view benches. Close to everything the Westside of Santa Cruz has to offer including many restaurants, Natural Bridges State Park, SC Beach Boardwalk and the many coastal beaches! Closeby hiking trails in Pogonip, minutes to the UCSC campus, University Terrace Park, and located in the Westlake Elementary district. This home will make a great first time home, vacation getaway, or investment opportunity! Professional photos posted on Wednesday!



148 Palo Verde Terrace, Santa Cruz 95060

Class:	Res. Townhouse	List Price:	\$509,000	Status:	Sold
Beds:	1	Sale Price:	\$500,000	MLS#:	ML81798373
Baths (F/P):	1 (1/0)	List Date:	06/25/2020	DOM:	37
SqFt:	870 SqFt (Tax)	COE Date:	09/03/2020	HOA Fee:	\$620
Lot Size:	915 SqFt			X St:	Nobel
Elem:	/ Santa Cruz City Elementary				
High:	/ Santa Cruz City High				

Public: Rare sought after Bay View unit on the upper Westside, walk to UCSC. Large one Bedroom, plenty of room for two beds and two desks with ease and an Ocean View! Huge oversized walk-in closet. In house laundry too. Newer on-demand water heater, stackable washer/dryer, beautiful vinyl flooring downstairs, & large pantry in the kitchen. The bathroom has a new tub/shower enclosure and fixtures. Well kept community with pool, lovely green spaces, walking and biking paths all around while close to everything. There's a nice patio area perfect for barbecuing with room for surf board/bike storage plus locking storage shed.. 1 assigned carport parking spot plus guest parking pass. nearby and JUMP Bikes to ride up/down Bay Street! Easy access to the Westside restaurants, shops, surfing, Wilder Ranch, Downtown Santa Cruz and the University. This one is ready to GO!